

TM 11-6660-258-25P

DEPARTMENT OF THE ARMY TECHNICAL MANUAL

DS, GS, AND DEPOT MAINTENANCE REPAIR PARTS AND SPECIAL TOOL LISTS

THEODOLITES DOUBLE CENTER ML-474/GM AND ML-474A/GM



HEADQUARTERS, DEPARTMENT OF THE ARMY

OCTOBER 1970

TECHNICAL MANUAL }
No. 11-6660-258-25P }

HEADQUARTERS
DEPARTMENT OF THE ARMY
WASHINGTON, D.C., 22 October 1970

DS, GS, and Depot Maintenance Repair Parts and Special Tool Lists
THEODOLITES, DOUBLE CENTER ML-474/GM AND ML-474A/GM

Current as of 23 June 1970

	Paragraph	Page
SECTION I. INTRODUCTION		
Scope -----	1	ii
General -----	2	ii
Explanation of columns -----	3	ii
Special information -----	4	iv
Location of repair parts -----	5	v
Federal supply code for manufacturers -----	6	v
Recommendation for maintenance publication improvements -----	7	v
II. PRESCRIBED LOAD ALLOWANCE -----		18
III. REPAIR PARTS FOR ORGANIZATIONAL MAINTENANCE -----		19
IV. SPECIAL TOOLS, TEST, AND SUPPORT EQUIPMENT FOR ORGANIZATIONAL MAINTENANCE (Nonapplicable).		
V. REPAIR PARTS FOR DIRECT SUPPORT, GENERAL SUPPORT, AND DEPOT MAINTENANCE -----		22
VI. SPECIAL TOOLS, TEST, AND SUPPORT EQUIPMENT FOR DIRECT SUPPORT, GENERAL SUPPORT, AND DEPOT MAINTENANCE (Nonapplicable).		
VII. INDEX—FEDERAL STOCK NUMBER CROSS-REFERENCE TO FIGURE AND ITEM NUMBER OR REFERENCE DESIGNATION -----		35
VIII. INDEX—REFERENCE DESIGNATION CROSS-REFERENCE TO PAGE NUMBER -----		40

*This manual supersedes so much of TM 11-6675-200-20, 20 November 1958, and TM 11-6675-200-25, 8 December 1958, as pertains to repair parts and special tools lists for ML-474/GM and ML-474A/GM.

SECTION I

INTRODUCTION

1. Scope

This manual lists repair parts and special tools required for the performance of organizational, direct support, general support, and depot maintenance of the ML-474/GM and ML-474A/GM.

2. General

This repair parts and special tools list is divided into the following sections:

a. Prescribed Load Allowance (PLA)—Section II. A composite listing of repair parts, special tools, test and support equipment having quantitative allowances for initial stockage at the organizational level.

b. Repair Parts for Organizational Maintenance—Section III. A list of repair parts authorized for the performance of maintenance at the organizational level.

c. Special Tools, Test, and Support Equipment for Organizational Maintenance—Section IV. Not applicable.

d. Repair Parts for Direct Support, General Support, and Depot Maintenance—Section V. A list of repair parts authorized for the performance of maintenance at the direct support, general support, and depot level.

e. Special Tools, Test, and Support Equipment for Direct Support, General Support, and Depot Maintenance—Section VI. Not applicable.

f. Index—Federal Stock Number Cross-Reference to Figure and Item Number or Reference Designation—Section VII. A list of Federal stock numbers in ascending numerical sequence, followed by a list of reference numbers appearing in ascending alphanumeric sequence, cross-referenced to the figure number and reference designation.

g. Index—Reference Designation Cross-Reference to Page Number—Section VIII. A list of reference designations cross-referenced to page numbers.

3. Explanation of Columns

The following provides an explanation of columns in the tabular lists:

a. Source, Maintenance, and Recoverability Codes (SMR).

(1) Source codes indicate the selection status and source for the list item. Source codes are—

<i>Code</i>	<i>Explanation</i>
P	Repair parts which are stocked in or supplied from the GSA/DSA, or Army supply system and authorized for use at indicated maintenance categories.
P2	Repair parts which are procured and stocked for insurance purposes because the combat or military essentiality of the end item dictates that a minimum quantity be available in the supply system.
P9	Assigned to items which are NSA design controlled: unique repair parts, special tools, test, measuring and diagnostic equipment, which are stocked and supplied by the Army COMSEC logistic system, and which are not subject to the provisions of AR 380-41.
P10	Assigned to items which are NSA design controlled: special tools, test, measuring and diagnostic equipment for COMSEC support, which are accountable under the provisions of AR 380-41, and which are stocked and supplied by the Army COMSEC logistic system.
M	Repair parts which are not procured or stocked, but are to be manufactured in indicated maintenance levels.
A	Assemblies which are not procured or stocked as such, but are made up of two or more units. Such component units carry individual stock numbers and descriptions, are procured and stocked separately and can be assembled to form

<i>Code</i>	<i>Explanation</i>
	the required assembly at indicated maintenance categories.
X	Parts and assemblies which are not procured or stocked and the mortality of which normally is below that of the applicable end item or component.
X1	Repair parts which are not procured or stocked. The requirement for such items will be filled by use of the next higher assembly or component.
X2	Repair parts which are not stocked. The indicated maintenance category requiring such repair parts will attempt to obtain same through cannibalization. Where such parts are not obtainable through cannibalization, requirements will be requisitioned, with accompanying justification, through normal supply channels.
G	Major assemblies that are procured with PEMA funds for initial issue only as exchange assemblies at DSU and GSU level. These assemblies will not be stocked above DS and GS level returned to depot supply level.

(2) Maintenance code indicates the lowest category of maintenance authorized to install the listed item. The maintenance level codes are—

<i>Code</i>	<i>Explanation</i>
C	----- Operator/crew
O	----- Organizational maintenance
F	----- Direct support maintenance
H	---- General support maintenance
D	----- Depot maintenance

(3) Recoverability codes indicate whether unserviceable items should be returned for recovery or salvage. Items not coded are expendable. Recoverability codes are—

<i>Code</i>	<i>Explanation</i>
R	Repair parts and assemblies that are economically repairable at DSU and GSU activities and are normally furnished by supply on an exchange basis.
S	Repair parts and assemblies which are economically repairable at DSU and GSU activities and which normally are furnished by supply on an exchange basis. When items are determined by GSU to be uneconomically repairable, they will be evacuated to a depot for evaluation and analysis before final disposition.
T	High-dollar value recoverable repair parts which are subject to special handling and are issued on an exchange basis.

<i>Code</i>	<i>Explanation</i>
	Such repair parts normally are repaired or overhauled at depot maintenance activities.
U	Repair parts specifically selected for salvage by reclamation units because of precious metal content, critical materials, or high-dollar value reusable casings or castings.

c. Description. Indicates the Federal item name and any additional description of the item required. The index number has been included as part of the description to aid in the location of "same as" items. A part number or other reference number is followed by the applicable five-digit Federal supply code for manufacturers in parentheses.

d. Unit of Measure (U/M). A two-character alphabetic abbreviation indicating the amount or quantity of the item upon which the allowances are based, e.g., ft, ea, pr, etc.

e. Quantity Incorporated in Unit, Indicates the quantity of the item used in the ML-474/GM and ML-474A/GM.

f. 15-Day Organizational Maintenance Allowances.

(1) The allowance columns are divided into four subcolumns. Indicated in each subcolumn opposite the first appearance of each item is the total quantity of items authorized for the number of equipments supported. Subsequent appearances of the same item will have the letters "REF" in the allowance columns. Items authorized for use as required, but not for initial stockage, are identified with an asterisk in the allowance column.

(2) The quantitative allowances for organizational level of maintenance represents one initial prescribed load or a 15-day period for the number of equipments supported. Units and organizations authorized additional prescribed loads will multiply the number of prescribed loads authorized by the quantity of repair parts reflected in the appropriate density column to obtain the total quantity of repair parts authorized.

(3) Organizational units providing maintenance for more than 100 of these equipments shall determine the total quantity of parts required by converting the equipment quantity to a decimal factor by placing a decimal point before the next to last digit of the number to indicate hundredths, and multiplying the decimal factor by the parts quantity authorized in the 51-100 allowance column. *Example,* author-

ized allowance for 51–100 equipments is 12; for 140 equipments multiply 12 by 1.40 or 16.80 rounded off to 17 parts required.

(4) Subsequent changes to allowances will be limited as follows: No change in the range of items is authorized. If additional items are considered necessary, recommendation should be forwarded to Commanding General, U.S. Army Electronics Command, ATTN: AMSEL–ME–NMP–EM, Fort Monmouth, N.J. 07703, for exception or revision to the allowance list. Revisions to the range of items authorized will be made by the USA ECOM National Maintenance Point based upon engineering experience, demand data, or TAERS information.

g. 30-Day DS/GS Maintenance Allowances.

NOTE

Allowances in GS Column are for GS maintenance only.

(1) The allowance columns are divided into three subcolumns. Indicated in each subcolumn, opposite the first appearance of each item, is the total quantity of items authorized for the number of equipments supported. Subsequent appearances of the same item will have the letters “REF” in the applicable allowance columns. Items authorized for use as required, but not for initial stockage, are identified with an asterisk in the allowance column.

(2) The quantitative allowances for DS/GS levels of maintenance will represent initial stockage for a 30-day period for the number of equipments supported.

(3) Determination of the total quantity of parts required for maintenance of more than 100 of these equipments can be accomplished by converting the equipment quantity to a decimal factor by placing a decimal point before the next to last digit of the number to indicate hundredths, and multiplying the decimal factor by the parts quantity authorized in the 51–100 allowance column. *Example*, authorized allowance for 51–100 equipments is 40; for 150 equipments multiply 40 by 1.50 or 60 parts required.

h. One-Year Allowances per 100 Equipments/Contingency Planning Purposes. Indicates opposite the first appearance of each item the total quantity required for distribution and contingency planning purposes. The range of items indicates total quantities of all authorized items required to provide for adequate support of 100 equipments for 1 year.

i. Depot Maintenance Allowance per 100 Equipments. Indicates opposite the first appearance of

each item the total quantity authorized for depot maintenance of 100 equipments. Subsequent appearances of the same item will have the letters “REF” in the allowance column. Items authorized for use as required, but not for initial stockage, are identified with an asterisk in the allowance column.

j. Illustrations.

(1) *Figure number.* Indicates the figure number in which the item is shown.

(2) *Item number or reference designation.* Indicates the reference designation used to identify the item in the illustration.

4. Special Information

a. Identification of the usable on codes of this publication are—

Code	Used on—
1	----- ML-474/GM
2	----- ML-474A/GM

b. Repair parts mortality is computed from failure rates derived from experience factors with the individual parts in a variety of equipments. Variations in the specific application and periods of use of electronics equipment, the fragility of electronic piece parts, plus intangible material and quality factors intrinsic to the manufacture of electronic parts, do not permit mortality to be based on hours of end item use. However, long periods of continuous use under adverse conditions are likely to increase repair parts mortality.

c. The following publications pertain to the ML-474/GM and ML-474A/GM and components:

TM 11-6675-

200-10 ---- Operator’s Manual: Theodolites ML-47-C through ML-47-R, ML-247 and ML-247A and Double Center Theodolite ML-474/GM and ML-474A/GM (TO 49A1-1-101) .

TM 11-6675-

200-20 ---- Organizational Maintenance Manual (Including Repair Parts and Special Tool Lists): Theodolites ML-47-C through ML-47-R, ML-247 and ML-247-A and Double Center Theodolites ML-474/GM and ML-474A/GM.

TM 11-6675-

200-35 ---- DS, GS, and Depot Maintenance Manual: Theodolites ML-47-C

through ML-47-R, ML-247 and ML-247-A and Double Center Theodolites ML-474/GM and ML-474A/GM.

5. Location of Repair Parts

a. This manual contains two cross-reference indexes (sec. VII and sec. VIII) to be used to locate a repair part when either the Federal stock number, reference number (manufacturer's part number), or reference designation is known. The first column in each index is prepared in numerical and/or alphanumeric sequence in ascending order. Where a Federal stock number is not listed, refer to the reference number (manufacturer's part number) immediately following the Federal stock number.

b. When the Federal stock number is known, follow the procedures given in (1) and (2) below.

(1) Refer to the index of Federal stock numbers (sec. VII) and locate the Federal stock number. The FSN is cross-referenced to the applicable figure and reference designation.

(2) When the reference designation is determined, refer to the reference designation index, (sec. VIII). The reference designations are listed in alphanumeric ascending order (or numerical ascending order) and are cross-referenced to the page number on which they appear in the repair parts list (sec. III and V). Refer to the page number noted in the index and locate the reference designation in the repair parts list (col. 7b or col. 10b). If the word "REF" appears in the allowance column for the repair part, note the Federal stock number (col. 2) or man-

ufacturer's part number (col. 3). Refer to the FSN index and note the reference designation for that FSN or part number. Refer to the reference designation index and note the page number given for the reference designation. Refer to the page noted in the RPSTL (secs. III and V) and locate the reference designation in column 7b or column 10b.

c. When the reference designation is known, follow the procedures given in *b* (2) above.

d. When neither the FSN nor reference designation is known, identify the part in the illustration and follow directions given in *c* above or scrutinize column 3 on the repair parts lists (secs. III and V).

6. Federal Supply Code for Manufacturers

<i>Code</i>	<i>Manufacturer's name</i>
47705 -----	Screw and Bolt Corp. of America
63848 -----	Warren & Knight Co.
65263 -----	White David Instrument Division of Realist, Inc.
80063 -----	Army Electronics Command
88044 -----	Aeronautical Standards Group, Dept. of Navy and Air Force
96906 -----	Military Standards

7. Recommendation for Maintenance Publication Improvements

Reporting of errors, omissions, and recommendations for improving this publication by the individual user is encouraged. Reports should be submitted on DA Form 2028 (Recommended Changes to Publications) and forwarded direct to Commanding General, U.S. Army Electronics Command, ATTN: AMSEL-ME-NMP-EM, Fort Monmouth, N.J. 07703.

SECTION II. PRESCRIBED LOAD ALLOWANCE
 (1) (2)

FEDERAL STOCK NUMBER	DESCRIPTION	USABLE ON CODE	(3) 15-DAY ORG MAINT ALLOWANCE			
			(A) 1-5 CODE	(B) 6-20	(C) 21-50	(D) 51-100
5305-206-2018	SCREW, MACHINE: SC-B-52147 (80063)	1			2	2
5305-297-9106	SCREW: SM-B-531513 (80063)	1,2				2
5305-637-6643	SCREW: SM-B-531598 (80063)	1,2			2	2
5305-637-9770	SCREW: SM-B-531600 (80063)	1,2				2
5310-208-3356	NUT: SM-B-531530 (80063)	1,2			2	2
5310-595-7083	WASHER: SM-B-531527 (80063)	1,2			2	2
5340-356-5202	SPRING: SM-B-531599 (80063)	1,2				2
6240-797-2650	LAMP: 15-41 (63848)	1,2			2	2
6660-911-2308	SCREW, ADJUST: SM-B-531516	1,2				2
6675-597-9843	SPRING: SM-B-531514 (80063)	1,2				2
6675-634-9312	PIN, STRAIGHT HEADLESS: SC-B-88251 (80063)	1,2				2
6675-663-3388	SPRING, ADJUST: SM-B-531515 (80063)	1,2			2	2

SECTION (1) SMR CODE	III. REPAIR PARTS FOR ORGANIZATIONAL MAINTENANCE (2) FEDERAL STOCK NUMBER	(3) DESCRIPTION REFERENCE NUMBER & MFR CODE	USABLE ON CODE	(4) UNIT OF MEAS	(5) QTY INC IN UNIT	(6) 15-DAY ORGANIZATIONAL MAINTENANCE ALW				(7) ILLUSTRATIONS	
						(A) 1-5	(B) 6-20	(C) 21-50	(D) 51-100	(A) FIG NO	(B) ITEM NO OR REFERENCE DESIGNATION
G-O-S	6660-498-9773	A001 THEODLITE, DOUBLE CENTER ML-474/GM AND ML-474A/GM (THIS ITEM IS NONEXCHANGABLE)	1,2								
A-O-R		A002 THEODOLITE ASSY: SM-D-531500-1 (80063)	1,2	EA	1						
A-O-R		A003 SIGHT ASSY: SM-B-531508 (80063)	2	EA	1					8	
P-C	6660-448-8296	A009 EYESHIELD: SM-B-531509 (80063)	1,2	EA	1	*	*	*	*	5	MP5
P-O	6605-498-9649	A010 COMPASS ASSY: SM-C-531502 (80063)	1,2	EA	1	*	*	*	*	20	
A-O-R		A026 SCREW ASSY: SM-B-531659 (80063)	1,2	EA	1					20	MP230
A-O-R		A027 NEEDLE ASSY: SM-B-531653 (80063)	1,2	EA	1					20	MP231
P-O	6675-348-4792	A032 EL CONTROL: SM-B-531504 (80063)	1,2	EA	1	*	*	*	*	15	
P-O	5310-595-7083	A034 WASHER: SM-B-531527 (80063)	1,2	EA	2	*	*	2	2	15	MP85, MP86
A-O-R		A035 PLATE ASSY: SM-B-531681 (80063)	1,2	EA	1						MP236
P-O	5310-208-3356	A038 NUT: SM-B-531530 (80063)	1,2	EA	2	*	*	2	2	15	MP29, MP30
A-O-R		A042 WORM FRAME ASSY: SM-C-531684 (80063)	1,2	EA	1						MP242
A-O-R		A047 SCREW ASSY: SM-B-531543 (80063)	1,2	EA	1					15	MP248
P-O	6675-373-3899	A061 AZ CONTROL: SM-C-531526 (80063)	1,2	EA	1	*	*	*	*	17	
P-O	5310-595-7083	A065 WASHER: SAME AS A034	1,2	EA	2	REF	REF	REF	REF	17	MP130, MP131
P-O	5310-208-3356	A069 NUT: SAME AS A038	1,2	EA	2	REF	REF	REF	REF	17	MP119, MP120
A-O-R		A077 REFLECTOR ASSY: SM-B-531534 (80063)	1,2	EA	1					17	MP280
A-O-R		A084 FRAME ASSY: SM-C-531539 (80063)	1,2	EA	1					17	MP291
A-O-R		A089 SCREW ASSY: SAME A047	1,2	EA	1					17	MP296
A-O-R		A102 LOWBUBBLE ASSY: SM-B-531512 (80063)	1,2	EA	1					18	MP9
P-O	5305-297-9106	A104 SCREW: SM-B-531513 (80063)	1,2	EA	1	*	*	*	2	18	MP92
P-O	6675-597-9843	A105 SPRING: SM-B-531514 (80063)	1,2	EA	1	*	*	*	2	18	MP93
P-O	6675-663-3388	A106 SPRING, ADJUST: SM-B-531515 (80063)	1,2	EA	1	*	*	2	2	18	MP99
P-O	6660-911-2308	A107 SCREW, ADJUST: SM-B-531516 (80063)	1,2	EA	1	*	*	*	2	18	MP312
P-O	6660-521-1443	A111 LEVEL SPIRIT: SM-B-531519 (80063)	1,2	EA	1	*	*	*	*	18	MP9
A-O-R		A112 HIGH LEVEL ASSY: SM-B-531524 (80063)	1,2	EA	1					18	MP10
P-O	6675-597-9843	A113 SPRING: SAME AS A105	1,2	EA	1	REF	REF	REF	REF	18	MP118
P-O	5305-297-9106	A114 SCREW: SAME AS A104	1,2	EA	1	REF	REF	REF	REF	18	MP117
P-O	6675-663-3388	A115 SPRING, ADJUST: SAME AS A106	1,2	EA	1	REF	REF	REF	REF	18	MP100
P-O	6660-911-2308	A116 SCREW, ADJUST: SAME AS A107	1,2	EA	1	REF	REF	REF	REF	18	MP316
P-O	6660-521-1443	A120 LEVEL SPIRIT: SAME AS A111	1,2	EA	1	REF	REF	REF	REF	18	MP10
A-O-R		A121 ELECTRICAL ASSY: SM-C-531576 (80063)	1,2	EA	1					2	MP320
P-O	5905-642-5355	A129 RHEOSTAT: SM-B-531583 (80063)	1,2	EA	1	*	*	*	*	2	R1
P-O	5355-667-9336	A132 KNOB: SM-B-531585 (80063)	1,2	EA	1	*	*	*	*	2	MP113
P-O	5930-396-3467	A134 SWITCH ASSY: SM-B-531577 (80063)	1,2	EA	1	*	*	*	*	2	S2
P-O	6660-911-2307	A137 LAMP ASSY: SM-B-531503 (80063)	2	EA	1	*	*	*	*	2	XDS3
P-O	6240-797-2650	A140 LAMP: 15-41 (63848)	1,2	EA	1	*	*	2	2	2	DS3
A-O-R		A145 CONTACT ASSY: SM-B-531674 (80063)	1,2	EA	1					2	MP355
A-O-R		A149 LAMPHOLDER ASSY: SM-B-531678 (80063)	1,2	EA							MP358
P-O	6210-319-0824	A152 EL LAMP ASSY: SM-B-531506 (80063)	1,2	EA	1	*	*	*	*	2	XDS2
P-O	6240-797-2650	A155 LAMP: SAME AS A140	1,2	EA	1	REF	REF	REF	REF	2	DS2
A-O-R		A160 CONTACT ASSY: SAME AS A145	1,2	EA	1					2	MP368

SECTION III. REPAIR PARTS FOR ORGANIZATIONAL MAINTENANCE (CONTINUED)

(1) SMR CODE	(2) FEDERAL STOCK NUMBER	(3) DESCRIPTION REFERENCE NUMBER & MFR CODE	USABLE ON CODE	(4) UNIT OF MEAS	(5) QTY IN UNIT	(6) 15-DAY ORGANIZATIONAL MAINTENANCE ALW				(7) ILLUSTRATIONS	
						(A) 1-5	(B) 6-20	(C) 21-50	(D) 51-100	(A) FIG NO	(B) ITEM NO OR REFERENCE DESIGNATION
A-O-R		A164 LAMPHOLDER ASSY: SAME AS A149	1,2	EA	1						MP371
P-O	6250-523-6032	A167 HAIR LAMP ASSY: SM-B-531507 (80063)	1,2	EA	1	*	*	*	*	2	XDS1
A-O-R		A169 CONTACT ASSY: SAME AS A145	1,2	EA	1					2	MP376
P-O	6240-797-2650	A175 LAMP: SAME AS A140	1,2	EA	1	REF	REF	REF	REF	2	DS1
A-O-R		A176 LAMPHOLDER ASSY: SAME AS A149	1,2	EA	1						MP382
A-O-R		A179 REFLECTOR ASSY: SM-B-531774 (80063)	1,2	EA	1					2	MP385
P-O	6135-583-9461	A182 BATTERY BOX: SM-B-531554 (80063)	1,2	EA	1	*	*	*	*	3	MP388
A-O-R		A185 BOX ASSY: SM-C-531555 (80063)	1,2	EA	1					3	
A-O-R		A195 CONTACT ASSY: SM-B-531566 (80063)	1,2	EA	1					3	MP407
A-O-R		A198 CONTACT ASSY: SM-B-531569 (80063)	1,2	EA	1					3	MP411
A-O-R		A206 VERNIER ASSY: SM-B-531587 (80063)	1,2	EA	1					18	MP421
A-O-R		A208 BUMPER ASSY: SM-B-531590 (80063)	1,2	EA	1					18	MP425
P-O	6675-663-3388	A211 SPRING, ADJUST: SAME AS A106	1,2	EA	1	REF	REF	REF	REF	18	MP430
A-O-R		A213 PLUNGER ASSY: SM-B-531593 (80063)	1,2	EA	1	*	*	*	*	18	MP432
A-O-R		A214 LOW BUMPER ASSY: SM-B-531608 (80063)	1,2	EA	1	*	*	*	*	18	MP433
P-O	6675-663-3388	A218 SPRING, ADJUST: SAME AS A106	1,2	EA	1	REF	REF	REF	REF	18	MP439
A-O-R		A219 PLUNGER ASSY: SAME AS A213	1,2	EA	1	*	*	*	*	18	MP440
A-O-R		A220 STANDARD ASSY: SM-B-531596 (80063)	1,2	EA	1	*	*	*	*	16	MP441
P-O	5305-637-6643	A223 SCREW: SM-B-531598 (80063)	1,2	EA	2	*	*	2	2	16	MP103,MP103A
P-O	5340-356-5202	A224 SPRING: SM-B-531599 (80063)	1,2	EA	1	*	*	*	2	16	MP71
P-O	5305-637-9770	A225 SCREW: SM-B-531600 (80063)	1,2	EA	1	*	*	*	2	16	MP62
P-O	5310-545-8305	A226 NUT: SM-B-531604 (80063)	1,2	EA	1	*	*	*	*	16	MP34
P-O	5310-208-3726	A227 NUT: SM-B-531606 (80063)	1,2	EA	1	*	*	*	*	16	MP35
A-O-R		A228 STANDARD ASSY: SM-B-531610 (80063)	1,2	EA	1	*	*	*	*	14	
P-O	5340-356-5202	A230 SPRING: SAME AS A224	1,2	EA	1	REF	REF	REF	REF	14	MP127
P-O	5305-637-9770	A231 SCREW: SAME AS A225	1,2	EA	1	REF	REF	REF	REF	14	MP63
P-O	5305-637-6643	A232 SCREW: SAME AS A223	1,2	EA	2	REF	REF	REF	REF	14	MP103B,MP103C
A-O-R		A233 CENTER ASSY: SM-C-531614 (80063)	1,2	EA	1					11	MP457
A-O-R		A240 CIRCLE ASSY: SM-C-531624 (80063)	1,2	EA	1					11	MP464
P-O	5305-638-7534	A244 THUMBSCREW: SM-B-531630 (80063)	1,2	EA	1	*	*	*	*	12	MP102
P-O	6675-322-4487	A245 THUMBSCREW: SM-B-531631 (80063)	1,2	EA	1	*	*	*	*	12	MP64
P-O	6675-663-3387	A246 SPRING: SM-B-531632 (80063)	1,2	EA	1	*	*	*	*	12	MP70
P-O	5305-524-0228	A247 TENSION SCREW: SM-B-531633 (80063)	1,2	EA	1	*	*	*	*	12	MP50
P-O	5305-639-3409	A248 SCREW ASSY: SM-B-531634 (80063)	1,2	EA	1	*	*	*	*	12	MP33
P-O		A250 SCREW ASSY: SM-B-531639 (80063)	1,2	EA	4	*	*	*	*	13	MP36 THRU MP39
P-O	6675-219-7193	A251 CAP: SM-B-531643 (80063)	1,2	EA	4	*	*	*	*	13	MP17 THRU MP20
P-O	5305-206-2018	A251A SCREW, MACHINE: SC-B-52147 (80063)	1	EA	4	*	*	2	2		
A-O-R		A261 CELL ASSY: SM-B-531692 (80063)	1,2	EA	1					5	MP26
A-O-R		A267 TRIPLET ASSY: SM-B-531698 (80063)	1,2	EA	1					5	MP477
P-O	6650-537-9222	A273 TELESCOPE ML-146: SM-C-531505 (80063)	1,2	EA	1	*	*	*	*	5	
A-O-R		A280 BRACKET ASSY: SM-B-531710 (80063)	1,2	EA	1					6	
P-O	6675-219-7197	A286 CELL ASSY: SM-B-531715 (80063)	1,2	EA	1	*	*	*	*	6	MP25
A-O-R		A288 LENS ASSY: SM-B-531717 (80063)	1,2	EA	1					6	MP489

SECTION III. REPAIR PARTS FOR ORGANIZATIONAL MAINTENANCE (CONTINUED)

(1) SMR CODE	(2) FEDERAL STOCK NUMBER	(3) DESCRIPTION REFERENCE NUMBER & MFR CODE	USABLE ON CODE	(4) UNIT OF MEAS	(5) QTY INC IN UNIT	(6) 15-DAY ORGANIZATIONAL MAINTENANCE ALW				(7) ILLUSTRATIONS	
						(A) 1-5	(B) 6-20	(C) 21-50	(D) 51-100	(A) FIG NO	(B) ITEM NO OR REFERENCE DESIGNATION
P-C	6760-222-0178	A303 CAP, PROTECTIVE: SM-B-531735 (80063)	1,2	EA	1	*	*	*	*	7	MP3
A-O-R		A317 PINION ASSY: SM-B-531747 (80063)	1,2	EA	1					9	MP525
A-O-R		A324 LENS ASSY: SM-B-531758 (80063)	1,2	EA	1					5	MP531
A-O-R		A329 TUBE ASSY: SM-B-531762 (80063)	1,2	EA	1					7	MP535
P-O	6660-911-2306	A331 OBJECTIVE ASSY: SM-B-5317665 (80063)	2	EA	1	*	*	*	*	7	MP537
P-O	6675-219-7220	A332 LENS ASSY: SM-B-531766 (80063)	1,2	EA	1	*	*	*	*	7	MP80
A-O-R		A336 BOX ASSY: SM-D-531783 (80063)	1,2	EA	1						MP541
P-C	6675-634-9312	A344 PIN, STRAIGHT HEADLESS: SC-B-88251 (80063)	1,2	EA	2	*	*	*	2	4	MP101
P-O	6240-797-2650	A345 LAMP: SAME AS A140	1,2	EA	1	REF	REF	REF	REF	4	DS2A
P-O	5340-322-4618	A383A CATCH, FASTNER: 6061-82 (65263)	1	EA	1	*	*	*	*		
P-C	6675-356-5225	A384 HOOD, CANVAS: SC-B-88249 (80063)	1,2	EA	1	*	*	*	*	4	MP671

SECTION V. REPAIR PARTS FOR DIRECT SUPPORT, GENERAL SUPPORT, AND DEPOT MAINTENANCE											
(1)	(2)	(3)	(4)	(5)	(6)	(7)	(8)	(9)	(10)		
SMR	FEDERAL	DESCRIPTION	UNIT	INC	30-DAY DS	30-DAY GS	1 YR	DEPOT	ILLUSTRATIONS		
CODE	STOCK		OF	IN	ALLOWANCE	ALLOWANCE	ALW PER	MAINT	(A)	(B)	
	NUMBER	REFERENCE NUMBER & MFR. CODE	MEAS	UNIT	(A)	(B)	EQUIP	ALW PER	FIG	ITEM NO OR	
			USABLE ON		1-20	21-50	CNTGCY	100	NO	REFERENCE	
			CODE		(C)	(C)		EQUIP		DESIGNATION	
					51-100	51-100					
G-O-S	6660-498-9773	A001 THEODOLITE, DOUBLE CENTER ML-474/GM AND ML-474A/GM (THIS ITEM IS NONEXPENDABLE)	1,2								
A-O-R		A002 THEODOLITE ASSY: SM-D-531500-1 (80063)	1,2	EA	1						
A-O-R		A003 SIGHT ASSY: SM-B-531508 (80063)	2	EA	1				8		
X2-F		A004 SCREW: 38-4-48-40 (63848)	1,2	EA	2				8		
X2-F		A005 BLADE: SM-C-531777 (80063)	1,2	EA	1				8		
X2-F		A006 SIGHT, FRONT: SM-B-531778 (80063)	1,2	EA	1				8		
X2-F		A007 SIGHT, REAR: SM-B-531779 (80063)	1,2	EA	1				8		
X2-F	5315-041-4186	A008 PIN: SM-B-531780 (80063)	1,2	EA	2				8		
P-C	6660-448-8296	A009 EYESHIELD: SM-B-531509 (80063)	1,2	EA	1	*	*	*	5	2	
P-O	6605-498-9649	A010 COMPASS ASSY: SM-C-531502 (80063)	1,2	EA	1	*	*	*	5	2	
X2-F	5305-145-7690	A011 SCREW, MACHINE: AN50083-5 (88044)	1,2	EA	4					20	
X2-F		A012 TOP PLATE: SM--531651 (80063)	1,2	EA	1					20	
X2-F	6675-219-7187	A013 BEARING: SM-B-531652 (80063)	1,2	EA	1					20	
X2-F	6675-396-3466	A014 LIFTER: SM-B-531658 (80063)	1,2	EA	1					20	
X2-F		A015 SCREW: 38-1-72-1-5F (63848)	1,2	EA	3					20	
X2-F		A016 COMPASS BOX: SM-C-531662 (80063)	1,2	EA	1					20	
X2-F		A017 SCALE BOARD: SM-B-531663 (80063)	1,2	EA	1					20	
X2-F	6675-530-2038	A018 GLASS: SM-B-531664 (80063)	1,2	EA	1					20	
X2-F		A019 LIFTER ARM: SM-B-531665 (80063)	1,2	EA	1					20	
X2-F	6675-219-7192	A020 CAM: SM-B-531666 980063)	1,2	EA	1					20	
X2-F	5310-595-5481	A021 WASHER, CONVEX: SM-B-531667 980063)	1,2	EA	1					20	
X2-F		A022 SCREW: SM-B-531668 (80063)	1,2	EA	1					20	
X2-F		A023 COVER: SM-B-531669 (80063)	1,2	EA	1					20	
X2-F		A024 COVER: SM-B-531670 (80063)	1,2	EA	1					20	
X2-F		A025 SCREW: 38-1-72-1F (63848)	1,2	EA	4					20	
A-O-R		A026 SCREW ASSY: SM-B-531659 (80063)	1,2	EA	1					20	
A-O-R		A027 NEEDLE ASSY: SM-B-531653 (80063)	1,2	EA	1					20	
X2-F		A028 POINTER: SM-B-531654 (80063)	1,2	EA	1					20	

SECTION V. REPAIR PARTS FOR DIRECT SUPPORT, GENERAL SUPPORT, AND DEPOT MAINTENANCE (CONTINUED)

(1) SMR CODE	(2) FEDERAL STOCK NUMBER	(3) DESCRIPTION	(4) UNIT OF MEAS	(5) QTY INC IN UNIT	(6) 30-DAY DS MAINT ALLOWANCE (A) (B) (C)	(7) 30-DAY GS MAINT ALLOWANCE (A) (B) (C)	(8) 1 YR ALW PER EQUIP CNTG	(9) DEPOT MAINT ALW PER EQUIP	(10) ILLUSTRATIONS (A) (B) FIG NO ITEM NO OR REFERENCE DESIGNATION
X2-F		A029 VEE JEWEL ASSY: SM-B-531655 (80063)	EA	1					MP233
X2-F		A030 VEE JEWEL: SM-B-531656 (80063)	EA	1					MP234
X2-F		A031 MOUNTING: SM-B-531657 (80063)	EA	1					MP235
P-O	6675-348-4792	A032 EL CONTROL: SM-B-531504 (80063)	EA	1	* * *	* * *	5	2	15
X2-F		A033 SCREW: 38-6-40-1F (63848)	EA	2					15 MP88, MP89
P-O	5310-595-7083	A034 WASHER: SM-B-531527 (80063)	EA	2	* 2 2	* 2 2	22	20	15 MP85, MP86
A-O-R		A035 PLATE ASSY: SM-B-531681 (80063)	EA	1					MP236
X2-F		A036 PLATE: AM-C-531682 (80063)	EA	1					15 MP237
X2-F	5307-322-4554	A037 STUD: AM-B-531529 (80063)	EA	2					15 MP77, MP78
P-O	5310-208-3356	A038 NUT: AM-B-531530 (80063)	EA	2	* 2 2	* 2 2	22	20	15 MP296 MP30
P-D	6675-392-9734	A039 SPRING: AM-B-531531 (80063)	EA	1			13	10	15 MP76
P-D	6675-392-9732	A040 SPRING: SM-B-531683 (80063)	EA	1			8	5	15 MP75
X2-F	5305-282-9490	A041 SCREW, MACHINE: ANS15UB2-3 (88044)	EA	4					15 MP238 THRU MP241
A-O-R		A042 WORM FRAME ASSY: SM-C-531684 (80063)	EA	1					MP242
X2-F		A043 SCREW: 38-4-48-3F (63848)	EA	2					15 MP243, MP244
X2-F	6660-392-9733	A044 SPRING: SM-B-531541 (80063)	EA	1					15 MP245
X2-F	5305-282-9490	A045 SCREW, MACHINE: SAME AS A041	EA	2					15 MP246, MP247
X2-F	5305-032-5527	A046 SCREW, ADJUST: SM-B-531542 (80063)	EA	1					15 MP47
A-O-R		A047 SCREW ASSY: SM-B-531543 (80063)	EA	1					15 MP248
X2-F		A048 FIXED DRUM: SM-B-531546 (80063)	EA	1					15 MP249
X2-F		A049 SCREW: 38-4-48-2-5F (63848)	EA	1					15 MP250
X2-F	3120-662-3124	A050 BUSHING: SM-B-531547 (80063)	EA	1					15 MP251
X2-F		A051 ADAPTER: SM-B-531549 (80063)	EA	1					15 MP252
X2-F	5305-823-5821	A052 SETSCREW: MS51026-18 (96906)	EA	1					15 MP253
X2-F		A053 FRAME: SM-B-531685 (80063)	EA	1					15 MP254
X2-F		A054 WORM SHAFT: SM-B-531686 (80063)	EA	1					15 MP255
X2-F		A055 DIAL: SM-B-531687 (80063)	EA	1					15 MP256
X2-F	5305-537-8583	A056 SCREW: SM-B-531550 (80063)	EA	1					15 MP48

SECTION V. REPAIR PARTS FOR DIRECT SUPPORT, GENERAL SUPPORT, AND DEPOT MAINTENANCE (CONTINUED)

(1) SMR CODE	(2) FEDERAL STOCK NUMBER	(3) DESCRIPTION	(4) UNIT OF MEAS	(5) QTY	(6)			(7)			(8)	(9)	(10)		
		REFERENCE NUMBER & MFR. CODE	USABLE ON CODE	INC	IN	30-DAY ALLOWANCE (A)	DS (B)	MAINT (C)	30-DAY ALLOWANCE (A)	GS (B)	MAINT (C)	1 YR ALW EQUIP CNTG	DEPOT ALW PER EQUIP	ILLUSTRATIONS (A) FIG NO	(B) ITEM NO OR REFERENCE DESIGNATION
X2-F	5310-595-6480	A057 WASHER, FLAT: SM-B-531551 (80063)	1,2	EA	1									15	MP257
X2-F	5305-052-5949	A058 SCREW, MACHINE: MS35198-8 (96906)	1,2	EA	1									15	MP258
X2-F		A059 SCREW: 38-3-56-4FF (63848)	1,2	EA	1									15	MP259
X2-F		A060 WASHER, FLAT: SM-B-531553 (80063)	1,2	EA	1									15	MP260
P-O	6675-373-3899	A061 AZ CONTROL: SM-C-531526 (80063)	1,2	EA	1	*	*	*	*	*	*	4	1	17	
X2-F		A062 SCREW, ADJUST: SM-B-531627 (80063)	1,2	EA	4									11	MP261 THRU MP264
X2-F		A063 SCREW: 38-3-56-40 (63848)	1,2	EA	2										MP265, MP266
X2-F		A064 SCREW: 38-3-56-30 (63848)	1,2	EA	2									17	MP267, MP268
P-O	5310-595-7083	A065 WASHER: SAME AS A034	1,2	EA	2	REF	REF	REF	REF	REF	REF	REF	REF	17	MP130, MP131
X2-F		A066 SCREW: SAME AS A043	1,2	EA	2									17	MP269, MP270
X2-F		A067 PLATE: SM-C-531528 (80063)	1,2	EA	1									17	MP271
X2-F	5307-322-4554	A068 STUD: SAME AS A037	1,2	EA	2									17	MP128, MP129
P-O	5310-208-3356	A069 NUT: SAME AS A038	1,2	EA	2	REF	REF	REF	REF	REF	REF	REF	REF	17	MP119, MP120
P-D	6675-392-9734	A070 SPRING: SAME AS A039											REF	17	MP272
X2-F		A071 SPRING: SM-B-531532 (80063)	1,2	EA	1									17	MP272
X2-F	5305-282-9490	A072 SCREW, MACHINE: SAME AS A041	1,2	EA	3									17	MP273, MP274, MP275
X2-F		A073 SCREW: AN515UB2-6 (88044)	1,2	EA	1									17	MP276
X2-F	5310-167-1356	A074 NUT, PLAIN, HEX: (88044)	1,2	EA	1									17	MP277
X2-F		A075 WASHER: AN960B2L (88044)	1,2	EA	1									17	MP278
X2-F	5305-207-7488	A076 PIN: SM-B-531533 (80063)	1,2	EA	1									17	MP279
A-O-R		A077 REFLECTOR ASSY: SM-B-531534 (80063)	1,2	EA	1									17	MP280
X2-F		A078 SCREW: 38-2-56-40 (63848)	1,2	EA	2									17	MP281, MP282
X2-F		A079 HINGE, RIGHT: SM-B-531535 (80063)	1,2	EA	1									17	MP283
X2-F		A080 BAR: SM-B-531536 (80063)	1,2	EA	1									17	MP284
X2-F		A081 HINGE, LEFT: SM-B-531537 (80063)	1,2	EA	1									17	MP285
X2-F		A082 VERNIER REEL: SM-B531538 (80063)	1,2	EA	1									17	MP286
X2-F		A083 SCREW: 38-1-72-5F (63848)	1,2	EA	4									17	MP287 THRU MP290
A-O-R		A084 FRAME ASSY: SM-C-531539 (80063)	1,2	EA	1									17	MP291
X2-F		A085 FRAME: SM-B-531540 (80063)	1,2	EA	1									17	MP292
X2-F	6660-392-9733	A086 SPRING: SAME AS A044	1,2	EA	1									17	MP293

SECTION V. REPAIR PARTS FOR DIRECT SUPPORT, GENERAL SUPPORT, AND DEPOT MAINTENANCE (CONTINUED)

(1) SMR CODE	(2) FEDERAL STOCK NUMBER	(3) DESCRIPTION	(4) UNIT OF MEAS	(5) QTY INC IN UNIT	(6) 30-DAY DS MAINT ALLOWANCE			(7) 30-DAY GS MAINT ALLOWANCE			(8) 1 YR ALW EQUIP CNTG	(9) DEPOT MAINT ALW PER EQUIP	(10) ILLUSTRATIONS (A) FIG NO	(B) ITEM NO OR REFERENCE DESIGNATION	
		REFERENCE NUMBER & MFR. CODE	USABLE ON CODE		(A) 1-20	(B) 21-50	(C) 51-100	(A) 1-20	(B) 21-50	(C) 51-100					
X2-F	5305-282-9490	A087 SCREW, MACHINE: SAME AS A041	1,2	EA	2							17	MP294, MP295		
X2-F	5305-032-5527	A088 SCREW, ADJUST: SAME AS A046	1,2	EA	1							17	MP46		
A-O-R		A089 SCREW ASSY: SAME AS A047	1,2	EA	1							17	MP296		
X2-F		A090 FIXED DRUM: SAME AS A048	1,2	EA	1							17	MP297		
X2-F		A091 SCREW: SAME AS A049	1,2	EA	1							17	MP298		
X2-F	3120-662-3124	A092 BUSHING: SAME AS A050	1,2	EA	1							17	MP299		
X2-F		A093 WORM SHAFT: SM-B-531548 (80063)	1,2	EA	1							17	MP300		
X2-F		A094 ADAPTER: SAME AS A051	1,2	EA	1							17	MP301		
X2-F	5305-823-5821	A095 SETSCREW: SAME AS A052	1,2	EA	1							17	MP302		
X2-F	5305-537-8583	A096 SCREW: SAME AS A056	1,2	EA	1							17	MP49		
X2-F	5310-595-6480	A097 WASHER, FLAT: SAME AS A057	1,2	EA	1							17	MP303		
X2-F		A098 DIAL: SM-B-531552 (80063)	1,2	EA	1							17	MP304		
X2-F		A099 WASHER, FLAT: SAME AS A060	1,2	EA	1							17	MP305		
X2-F	5305-052-5949	A100 SCREW, MACHINE: SAME AS A058	1,2	EA	1							17	MP306		
X2-F		A101 SCREW: SAME AS A059	1,2	EA	1							17	MP307		
A-O-R		A102 LOW BUBBLE ASSY: SM-B-531512 (80063)	1,2	EA	1							18	MP9		
X2-F		A103 SCREW: SAME AS A004	1,2	EA	4							18	MP308 THRU MP311		
P-O	5305-297-9106	A104 SCREW: SM-B-531513 (80063)	1,2	EA	1	*	2	2	*	2	2	13	10	18	MP92
P-O	6675-597-9843	A105 SPRING: SM-B-531513 (80063)	1,2	EA	1	*	2	2	*	2	2	13	10	18	MP93
P-O	6675-663-3388	A106 SPRING, ADJUST: SM-B-531515 (80063)	1,2	EA	1	*	2	2	*	2	2	22	20	18	MP99
P-O	6660-911-2308	A107 SCREW, ADJUST: SM-B-531516 (80063)	1,2	EA	1	*	2	2	*	2	2	13	10	18	MP312
X2-F		A108 SPACER, SLEEVE SM-B-531517 (80063)	1,2	EA	1									18	MP313
X2-F		A109 BRACKET: SM-C-531518 (80063)	1,2	EA	1									18	MP314
X2-F		A110 SCREW: 38-4-48-4F (63848)	1,2	EA	1									18	MP315
P-O	6660-521-1443	A111 LEVEL SPIRIT: SM-B-531519 (80063)	1,2	EA	1	*	*	*	*	*	*	5	2	18	MP9
A-O-R		A112 HIGH LEVEL ASSY: SM-B-531524 (80063)	1,2	EA	1									18	MP10
P-O	6675-597-9843	A113 SPRING: SAME AS A105	1,2	EA	1	REF	REF	REF	REF	REF	REF	REF	REF	18	MP118
P-O	5305-297-9106	A114 SCREW: SAME AS A104	1,2	EA	1	REF	REF	REF	REF	REF	REF	REF	REF	18	MP117
P-O	6675-663-3388	A115 SPRING, ADJUST: SAME AS A106	1,2	EA	1	REF	REF	REF	REF	REF	REF	REF	REF	18	MP100
P-O	6660-911-2308	A116 SCREW, ADJUST: SAME AS A107	1,2	EA	1	REF	REF	REF	REF	REF	REF	REF	REF	18	MP316
X2-F		A117 SPACER SLEEVE: SAME AS A108	1,2	EA	1									18	MP317
X2-F		A118 BRACKET: SM-C-531525 (80063)	1,2	EA	1									18	MP318

SECTION V. REPAIR PARTS FOR DIRECT SUPPORT, GENERAL SUPPORT, AND DEPOT MAINTENANCE (CONTINUED)

(1) SMR CODE	(2) FEDERAL STOCK NUMBER	(3) DESCRIPTION	(4) UNIT OF MEAS	(5) QTY INC IN UNIT	(6) 30-DAY DS MAINT ALLOWANCE (A) (B) (C) 1-20 21-50 51-100	(7) 30-DAY GS MAINT ALLOWANCE (A) (B) (C) 1-20 21-50 51-100	(8) 1 YR ALW PER EQUIP CNTGTCY	(9) DEPOT MAINT ALW PER 100 EQUIP	(10) ILLUSTRATIONS (A) (B) FIG NO ITEM NO OR REFERENCE DESIGNATION	
X2-F		A119 SCREW: SAME AS A110	1,2	EA	1				18	MP319
P-O	6660-521-1443	A120 LEVEL SPRIT: SAME AS A111	1,2	EA	1	REF REF REF	REF REF REF	REF REF REF	18	MP10
A-O-R		A121 ELECTRICAL ASSY: SM-C-531576 (80063)	1,2	EA	1				2	MP320
X2-F		A122 SCREW: 38-3-56-2F (63848)	1,2	EA	4				2	MP321 THRU MP324
X2-F		A123 SCREW: AN515UB2-2 (88044)	1,2	EA	5				2	MP325 THRU MP329
X2-F	5940-374-3313	A124 CLIP, S WIRE: SM-B-531511 (80063)	1,2	EA	2				2	MP330, MP331
X2-F		A125 CLIP DBL WIRE: SM-B-531650 (80063)	1,2	EA	3				2	MP332, MP333, MP334
X2-F		A126 TERMINAL, LUG: SM-B-531580 (80063)	1,2	EA	3				2	MP335, MP336, MP337
X2-F		A127 INSULATION: SM-B-531581 (80063)	1,2	EA	3				2	MP338, MP339, MP340
X2-F	6675-219-7195	A128 HOUSING: SM-B-531582 (80063)	1,2	EA	1				2	MP24
P-O	5905-642-5355	A129 RHEOSTAT: SM-B-531583 (80063)	1,2	EA	1	* * *	* * *	* * *	5 2	2 R1
X2-F		A130 MOUNTING PLATES: SM-B-531584 (80063)	1,2	EA	1				2	MP115
X2-F		A131 SCREW: SAME AS A078	1,2	EA	4				2	MP341 THRU MP344
P-O	5355-667-9336	A132 KNOB: SM-B-531585 (80063)	1,2	EA	1	* * *	* * *	* * *	5 6	2 MP113
X2-F	6135-306-2354	A133 CONTACT PLUG: SM-B-531586 (80063)	1,2	EA	1				2	MP345
P-O	5930-396-3467	A134 SWITCH ASSY: SM-B-531577 (80063)	1,2	EA	1	* * *	* * *	* * *	5 5	2 S2
X2-F		A135 SWITCH HOUSING: SM-B-531578 (80063)	1,2	EA	1				2	MP346
X2-F		A136 SWITCH: SM-B-531579 (80063)	1,2	EA	1				2	S2
P-O	6660-911-2307	A137 LAMP ASSY: SM-B-531503 (80063)	2	EA	1	* * *	* * *	* * *	4 4	2 XDS3
X2-F		A138 SCREW: SAME AS A123	1,2	EA	3				2	MP347, MP348, MP349
X2-F		A139 SHADE, LAMP: SM-B-531671 (80063)	1,2	EA	1				2	MP350
P-O	6240-797-2650	A140 LAMP: 15-41 (63848)	1,2	EA		* 2 2	* 2 2	* 2 2	18 15	2 DS3
X2-F	5330-291-9949	A141 INS. EASHER: SM-B-531672 (80063)	1,2	EA	1				2	MP351
X2-F	5305-207-7488	A142 PIN: SAME AS A076	1,2	EA	1				2	MP352
X2-F		A143 INS. BUSHING: SM-B-531673 (80063)	1,2	EA	1				2	MP353
X2-F	5310-167-1367	A144 NUT, PLAIN, HEX: AN345B-8 (88044)	1,2	EA	1				2	MP354
A-O-R		A145 CONTACT ASSY: SM-B-531674 (80063)	1,2	EA	1				2	MP355
X2-F		A146 STUD CONTACT: SM-B-531675 (80063)	1,2	EA	1				2	MP356
X2-F		A147 CLIP, CONTACT: SM-B-531676 (80063)	1,2	EA	1				2	MP357
X2-F	6675-448-8168	A148 BRACKET: SM-B-531677 (80063)	1,2	EA	1				2	MP27

SECTION V. REPAIR PARTS FOR DIRECT SUPPORT, GENERAL SUPPORT, AND DEPOT MAINTENANCE (CONTINUED)														
(1)	(2)	(3)	(4)	(5)	(6)			(7)			(8)	(9)	(10)	
SMR	FEDERAL	DESCRIPTION	UNIT	QTY	30-DAY	DS	MAINT	30-DAY	GS	MAINT	1 YR	DEPOT	ILLUSTRATIONS	(B)
CODE	STOCK	REFERENCE NUMBER & MFR. CODE	OF	INC	ALLOWANCE	ALLOWANCE	ALLOWANCE	ALLOWANCE	ALLOWANCE	ALLOWANCE	ALW	PER	(A)	ITEM NO OR
	NUMBER		MEAS	IN	(A)	(B)	(C)	(A)	(B)	(C)	EQUIP	100	FIG	REFERENCE
			USABLE ON	UNIT	1-20	21-50	51-100	1-20	21-50	51-100	CNTG	PER	NO	DESIGNATION
A-O-R		A149 LAMPHOLDER ASSY: SM-B-531678 (80063)	1,2	EA	1									MP358
X2-F		A150 PIN: SM-B-51679 (80063)	1,2	EA	1									MP359
X2-F	6250-299-4238	A151 LAMPHOLDER: SM-B-531680 (80063)	1,2	EA	1								2	MP360
P-O	6210-319-0824	A152 EL LAMP ASSY: SM-B-531506 (80063)	1,2	EA	1	*	*	*	*	*	4	2	2	XDS2
X2-F		A153 SCREW: SAME AS A123	1,2	EA	2								2	MP361, MP362
X2-F		A154 SHADE, LAMP: SAME AS A139	1,2	EA	1								2	MP363
P-O	6240-797-2650	A155 LAMP: SAME AS A140	1,2	EA	1	REF	REF	REF	REF	REF	REF	REF	2	DS2
X2-F	5330-291-9949	A156 INS. WASHER: SAME AS A141	1,2	EA	1								2	MP364
X2-F	5305-207-7488	A157 PIN: SAME AS A076	1,2	EA	1									MP365
X2-F		A158 INS. BUSHING: SAME AS A143	1,2	EA	1								2	MP366
X2-F	5310-167-1367	A159 NUT, PLAIN, HEX: SAME AS A144	1,2	EA	1								2	MP367
A-O-R		A160 CONTACT ASSY: SAME A145	1,2	EA	1								2	MP368
X2-F		A161 STUD, CONTACT: SAME AS A146	1,2	EA	1								2	MP369
X2-F		A162 CLIP, CONTACT: SAME AS A147	1,2	EA	1								2	MP370
X2-F	6675-448-8169	A163 BRACKET: SM-B-531772 (80063)	1,2	EA	1								2	MP14
A-O-R		A164 LAMPHOLDER ASSY: SAME AS A149	1,2	EA	1									MP371
X2-F		A165 PIN: SAME AS A150	1,2	EA	1									MP372
X2-F	6250-299-4238	A166 LAMPHOLDER: SAME AS A151	1,2	EA	1								2	MP373
P-O	6250-523-6032	A167 HAIR LAMP ASSY: SM-B-531507 (80063)	1,2	EA	1	*	*	*	*	*	4	2	2	XDS1
X2-F	5305-811-9463	A168 SCREW: AN520UB3-3 (88044)	1,2	EA	2								2	MP374, MP375
A-O-R		A169 CONTACT ASSY: SAME AS A145	1,2	EA	1								2	MP376
X2-F		A170 STUD, CONTACT: SAME AS A146	1,2	EA	1								2	MP377
X2-F		A171 CLIP, CONTACT: SAME AS A147	1,2	EA	1								2	MP378
X2-F	5310-167-1367	A172 NUT, PLAIN, HEX: SAME AS A144	1,2	EA	1								2	MP379
X2-F		A173 INS. BUSHING: SM-B-531773 (80063)	1,2	EA	1								2	MP380
X2-F	5330-291-9949	A174 INS. WASHER: SAME AS A141	1,2	EA	1								2	MP381
P-O	6240-797-2650	A175 LAMP: SAME AS A140	1,2	EA	1	REF	REF	REF	REF	REF	REF	REF	2	DS1
A-O-R		A176 LAMPHOLDER ASSY: SAME AS A149	1,2	EA	1									MP382
X2-F		A177 PIN: SAME AS A150	1,2	EA	1									MP383
X2-F	6250-299-4238	A178 LAMPHOLDER: SAME AS A151	1,2	EA	1								2	MP384
A-O-R		A179 REFLECTOR ASSY: SM-B-531774 (80063)	1,2	EA	1								2	MP385

SECTION V. REPAIR PARTS FOR DIRECT SUPPORT, GENERAL SUPPORT, AND DEPOT MAINTENANCE (CONTINUED)

(1) SMR CODE	(2) FEDERAL STOCK NUMBER	(3) DESCRIPTION	USABLE ON CODE	(4) UNIT OF MEAS	(5) QTY INC IN UNIT	(6)			(7)			(8) 1 YR ALW PER EQUIP CNTGCTY	(9) DEPOT ALW PER 100 EQUIP	(10) ILLUSTRATIONS	
						30-DAY ALLOWANCE (A) 1-20	DS MAINT (B) 21-50	(C) 51-100	30-DAY ALLOWANCE (A) 1-20	GS MAINT (B) 21-50	(C) 51-100			(A) FIG NO	(B) ITEM NO OR REFERENCE DESIGNATION
X2-F		A180 TIP: SM-B-531775 (80063)	1,2	EA	1									2	MP386
X2-F	6660-448-8292	A181 REFLECTOR: SM-B-531776 (80063)	1,2	EA	1									2	MP387
P-O	6135-583-9461	A182 BATTERY BOX: SM-B-531554 (80063)	1,2	EA	1	*	*	*	*	*	*	4	2	3	MP388
X2-F		A183 SCREW: MS35246-23 (96906)	1,2	EA	2									3	MP389, MP390
X2-F		A184 SCREW: 38-4-48-50 (63848)	1,2	EA	4									3	MP391 THRU MP394
A-O-R		A185 BOX ASSY: SM-C-531555 (80063)	1,2	EA	1									3	
X2-F		A186 BASE ASSY: SM-B-531556 (80063)	1,2	EA	1									3	MP395
X2-F		A187 CASE: SM-C-531559 (80063)	1,2	EA	1									3	MP396
X2-F		A188 PIN: SM-B-531560 (80063)	1,2	EA	2									3	MP397, MP398
X2-F		A189 CLIP: SM-B-531561 (80063)	1,2	EA	1									3	MP399
X2-F		A190 SCREW: SM-B-531562 (80063)	1,2	EA	2									3	MP400, MP401
X2-F		A191 INSULATOR, PL: SM-B-531563 (80063)	1,2	EA	1									3	MP402
X2-F		A192 INSULATOR, PL: SM-B-531564 (80063)	1,2	EA	1									3	MP403
X2-F	5305-042-1375	A193 SCREW: MS35246-26 (96906)	1,2	EA	3									3	MP404, MP405, MP406
X2-F	6675-597-9842	A194 CONTACT SPRING: SM-B-531565 (80063)	1,2	EA	1									3	E1
A-O-R		A195 CONTACT ASSY: SM-B-531566 (80063)	1,2	EA	1									3	MP407
X2-F		A196 SCREW: 38-2-56-50 (63848)	1,2	EA	2									3	MP408, MP409
X2-F		A197 BTRY GRD PLATE: SM-B-531568 (80063)	1,2	EA	1										MP410
A-O-R		A198 CONTACT ASSY: SM-B-531569 (80063)	1,2	EA	1									3	MP411
X2-F		A199 NUT, CONTACT: SM-B-531570 (80063)	1,2	EA	1										MP412
X2-F	5970-322-5201	A20 INSULATOR, DISK: SM-B-531571 (80063)	1,2	EA	1									3	MP413
X2-F	6660-392-9681	A201 CONTACT BAR: SM-B-531572 (80063)	1,2	EA	1									3	MP414
X2-F		A202 CONTACT NUT: SM-B-531573 (80063)	1,2	EA	1									3	MP415
X2-F	5330-290-8549	A203 INS. WASHER: SM-B-531574 (80063)	1,2	EA	1									3	MP416
X2-F		A204 INS. BUSHING: SM-B-531575 (80063)	1,2	EA	2									3	MP417, MP418
X2-F		A205 SCREW: 38-5-44-50 (63848)	1,2	EA	2									3	MP419, MP420
A-O-R		A206 VERNIER ASSY: SM-B-531587 (80063)	1,2	EA	1									18	MP421
X2-F		A207 SCREW: SAME AS A043	1,2	EA	3									18	MP422, MP423, MP424

SECTION V. REPAIR PARTS FOR DIRECT SUPPORT, GENERAL SUPPORT, AND DEPOT MAINTENANCE (CONTINUED)

(1) SMR CODE	(2) FEDERAL STOCK NUMBER	(3) DESCRIPTION	USABLE ON CODE	(4) UNIT OF MEAS	(5) QTY INC IN UNIT	(6)			(7)			(8)	(9)	(10)	
						30-DAY ALLOWANCE (A) 1-20	DS MAINT (B) 21-50	MAINT (C) 51-100	30-DAY GS MAINT ALLOWANCE (A) 1-20	(B) 21-50	(C) 51-100	1 YR ALW PER EQUIP CNTGCTY	DEPOT MAINT ALW PER 100 EQUIP	(A) FIG NO	(B) ITEM NO OR REFERENCE DESIGNATION
A-O-R		A208 BUMPER ASSY: SM-B-531590 (80063)	1,2	EA	1									18	MP425
X2-F	5305-042-1373	A209 SCREW, MACHINE: MS35246-24 (96906)	1,2	EA	3										MP426, MP427, MP428
X2-F		A210 BRACKET: SM-C-531591 (80063)	1,2	EA	1									18	MP429
P-O	6675-663-3388	A211 SPRING, ADJUST: SAME AS A106	1,2	EA	2	REF	REF	REF	REF	REF	REF	REF	REF	18	MP430
X2-F		A212 CAP: SM-B-531592 (80063)	1,2	EA	1									18	MP431
A-O-R		A213 PLUNGER ASSY: SM-B-531593 (80063)	1,2	EA	1									18	MP432
A-O-R		A214 LOW BUMPER ASSY: SM-B-531608 (80063)	1,2	EA	1									18	MP433
X2-F	5305-042-1373	A215 SCREW, MACHINE: SAME AS A209	1,2	EA	3									18	MP434, MP435, MP436
X2-F		A216 CAP: SAME AS A212	1,2	EA	1									18	MP437
X2-F	6660	A217 BRACKET: SM-B-531609 (80063)	1,2	EA	1									18	MP438
P-O	6675-663-3388	A218 SPRING, ADJUST: SAME AS A106	1,2	EA	1	REF	REF	REF	REF	REF	REF	REF	REF	18	MP439
A-O-R		A219 PLUNGER ASSY: SAME AS A213	1,2	EA	1									18	MP440
A-O-R		A220 STANDARD ASSY: SM-B-531596 (80063)	1,2	EA	1									16	MP441
X2-F		A221 SCREW: 38-8-36-5F (63848)	1,2	EA	8									16	MP442 THRU MP449
X2-F		A222 SCREW: 38-5-44-100 (63848)	1,2	EA	2									5	MP450, MP451
P-O	5305-637-6643	A223 SCREW: SM-B-531598 (80063)	1,2	EA	2	*	2	2	*	2	2	22	20	16	MP103, MP103A
P-O	5340-356-5202	A224 SPRING: SM-B-531599 (80063)	1,2	EA	1	*	2	2	*	2	2	13	10	16	MP71
P-O	5305-637-9770	A225 SCREW: SM-B-531600 (80063)	1,2	EA	1	*	2	2	*	2	2	13	10	16	MP62
P-O	5310-545-8305	A226 NUT: SM-B-531604 (80063)	1,2	EA	1	*	*	2	*	*	2	8	5	16	MP34
P-O	5310-208-3726	A227 NUT: SM-B-531606 (80063)	1,2	EA	1	*	*	2	*	*	2	8	5	16	MP35
A-O-R		A228 STANDARD ASSY: SM-B-531610 (80063)	1,2	EA	1										14
X2-F		A229 SCRE 38-3-36-6F (63848)	1,2	EA	4									14	MP453 THRU MP456
P-O	5340-356-5202	A230 SPRING: SAME AS A224	1,2	EA	1	REF	REF	REF	REF	REF	REF	REF	REF	14	MP127
P-O	5305-637-9770	A231 SCREW: SAME AS A225	1,2	EA	1	REF	REF	REF	REF	REF	REF	REF	REF	14	MP63
P-O	5305-637-6643	A232 SCREW: SAME AS A223	1,2	EA	2	REF	REF	REF	REF	REF	REF	REF	REF	14	MP103B, MP103C
A-O-R		A233 CENTER ASSY: SM-C-531614 (80063)	1,2	EA	1									11	MP457
X2-F		A234 PAOINT: SM-B-531616 (80063)	1,2	EA	1										MP458
X2-F	5310-638-4112	A235 CENTER NUT: SM-B-531617 (80063)	1,2	EA	1									11	MP32
X2-F	6675-212-8025	A236 CLAMP: SM-B-531619 (80063)	1,2	EA	1									12	MP22
X2-F	5310-392-2043	A237 NUT HALF BALL: SM-B-531621 (80063)	1,2	EA	1									13	MP114

SECTION V. REPAIR PARTS FOR DIRECT SUPPORT, GENERAL SUPPORT, AND DEPOT MAINTENANCE (CONTINUED)

(1) SMR CODE	(2) FEDERAL STOCK NUMBER	(3) DESCRIPTION	USABLE ON CODE	(4) UNIT OF MEAS	(5) QTY INC IN UNIT	(6) 30-DAY DS MAINT ALLOWANCE			(7) 30-DAY GS MAINT ALLOWANCE			(8) 1 YR ALW PER EQUIP CNTGNCY	(9) DEPOT MAINT ALW PER 100 EQUIP	(10) ILLUSTRATIONS	
						(A) 1-20	(B) 21-50	(C) 51-100	(A) 1-20	(B) 21-50	(C) 51-100			(A) FIG NO	(B) ITEM NO OR REFERENCE DESIGNATION
X2-F		A238 COLLAR: SM-B-531622 (80063)	1,2	EA	1									11	MP459
X2-F		A239 SCREW: SM-B-531623 (80063)	1,2	EA	4									11	MP460 THRU MP463
A-O-R		A240 CIRCLE ASSY: SM-C-531624 (80063)	1,2	EA	1									11	MP464
X2-F		A241 SCREW: 38-8-36-4-5FF (63848)	1,2	EA	4									11	MP465 THRU MP468
X2-F		A242 PLUNGER, DETENT SM-B-531628 (80063)	1,2	EA	1									12	MP469
X2-F		A243 PLATE, LEVELING: SM-C-531629 (80063)	1,2	EA	1									13	MP470
P-O	5305-638-7534	A244 THUMBSCREW: SM-B-531630 (80063)	1,2	EA	1	*	*	2	*	*	2	8	5	12	MP102
P-O	6675-322-4487	A245 THUMBSCREW: SM-B-531631 (80063)	1,2	EA	1	*	*	2	*	*	2	8	5	12	MP64
P-O	6675-663-3387	A246 SPRING: SM-B-531632 (80063)	1,2	EA	1	*	*	2	*	*	2	8	5	12	MP70
P-O	5305-524-0228	A247 TENSION SCREW: SM-B-531633 (80063)	1,2	EA	1	*	*	*	*	*	2	8	5	12	MP50
P-O	5305-639-3409	A248 SCREW ASSY: SM-B-531634 (80063)	1,2	EA	1	*	*	*	*	*	*	4	1	12	MP33
X2-F		A249 SHIFTING CENTER: SM-B-531638 (80063)	1,2	EA	1									13	MP471
P-O		A250 SCREW ASSY: SM-B-531639 (80063)	1,2	EA	4	*	*	2	*	*	2	10	20	13	MP36 THRU MP39
P-O	6675-219-7193	A251 CAP: SM-B-531643 (80063)	1,2	EA	4	*	*	2	*	*	2	10	8	13	MP17 THRU MP20
P-O	5305-206-2018	A251A SCREW, MACHINE: SC-B-52147 (80063)	1	EA	4	*	2	2	*	2	2	22	20		
P-D	6675-396-3465	A251B SLEEVE, CENTERING : 701-9-2 (65263)	1	EA	4							10	4		
P-O	6675-219-7217	A252 FRICTION SHOE: SM-B-531644 (80063)	1,2	EA	4	*	*	2	*	*	2	10	8	13	MP66 THRU MP69
X2-F		A253 CENTER CAP: SM-B-531646 (80063)	1,2	EA	1									11	MP472
P-D	6660-031-3069	A554 CENTER SPRING; SM-B-531645 (80063)	1,2	EA	1							4	3	11	MP72
X2-F	5305-207-6371	A255 THUMBSCREW: SM-B-531647 (80063)	1,2	EA	1									18	MP65
X2-F		A426 VER COVER GLASS: SM-B-531648 (80063)	1,2	EA	1									18	MP473
X2-F		A257 TOP PLATE: SM-B-531649 (80063)	1,2	EA	1									18	MP40
X2-F	4730-203-6580	A258 SCREW, THRUST: SM-B-531510 (80063)	1,2	EA	1									5	MP59
P-D	6675-219-7194	A259 EYEPIECE ASSY: SM-B-531690 (80063)	1,2	EA	1							4	2	5	MP3
X2-F	6675-508-9768	A260 CAP, EYEPIECE: SM-B-531691 (80063)	1,2	EA	1									5	MP7
A-O-R		A261 CELL ASSY: SM-B-531692 (80063)	1,2	EA	1									5	MP26
X2-F		A262 SCREW: SM-B-531693 (80063)	1,2	EA	1									5	MP98
X2-F		A263 CELL: SM-B-531694 (80063)	1,2	EA	1									5	MP7

SECTION V. REPAIR PARTS FOR DIRECT SUPPORT, GENERAL SUPPORT, AND DEPOT MAINTENANCE (CONTINUED)

(1) SMR CODE	(2) FEDERAL STOCK NUMBER	(3) DESCRIPTION	USABLE ON CODE	(4) UNIT OF MEAS	(5) QTY INC IN UNIT	(6) 30-DAY DS MAINT ALLOWANCE			(7) 30-DAY GS MAINT ALLOWANCE			(8) 1 YR ALW PER EQUIP CNTGNCY	(9) DEPOT MAINT ALW PER 100 EQUIP	(10) ILLUSTRATIONS	
						(A) 1-20	(B) 21-50	(C) 51-100	(A) 1-20	(B) 21-50	(C) 51-100			(A) FIG NO	(B) ITEM NO OR REFERENCE DESIGNATION
X2-F		A264 RING, THREADED: SM-B-531695 (80063)	1,2	EA	1									5	MP474
X2-F	6675-219-7199	A265 LENS-G-: SM-B-531696 (80063)	1,2	EA	1									5	MP475
X2-F		A266 EYEPIECE: SM-B-531697 (80063)	1,2	EA	1									5	MP476
A-O-R		A267 TRIPELT ASSY: SM-B-531698 (80063)	1,2	EA	1									5	MP477
X2-F		A268 ADAPTER: SM-B-531701 (80063)	1,2	EA	1									5	MP478
P-D	6650-448-8290	A269 RETICLE ASSY: SM-B-531702 (80063)	2	EA	1						4	2		5	MP43
P-D	5310-595-7762	A270 WASHER, SADDLE: SM-B-531688 (80063)	1,2	EA	4						10	8		5	MP81 THRU MP84
P-D	5305-448-8119	A271 SCREW: SM-B-531689 (80063)	1,2	EA	4						22	20		5	MP103 THRU MP06
X2-F	5305-145-6917	A272 SCREW, MACHINE: AN500B2-3 (88044)	1,2	EA	1									9	MP479
P-O	6650-537-9222	A273 TELESCOPE ML-146: SM-C-531505 (80063)	1,2	EA	1	*	*	*	*	*	*	4	2	5	
X1		A273A FINDER ASSY: SM-B-531704 (80063)	1,2	EA	1									6	
X2-F	6650-092-1558	A274 LEVER: SM-B-531705 (80063)	1,2	EA	1									6	MP6
X2-F		A275 SCREW: 38-1-72-30 (47705)	1,2	EA	1									6	MP480
P-D	6660-664-6227	A276 SPRING, HEL, COMP: SM-B-531706 (80063)	1,2	EA	1						4	5		6	MP56
X2-F	6660-396-3464	A277 PLUNGER ASSY: SM-B-531707 (80063)	1,2	EA	1									6	MP481
X2-F		A278 PIN: SM-B-531708 (80063)	1,2	EA	1										MP482
X2-F		A279 PLUNGER: SM-B-531709 (80063)	1,2	EA	1										MP41
A-O-R		A280 BRACKET ASSY: SM-B-531710 (80063)	1,2	EA	1									6	
X2-F	5305-322-4450	A281 SCREW, ADJUST: SM-B-531711 (80063)	1,2	EA	1									6	MP484
X2-F		A282 SCREW: 38-5-44-4-5F (63848)	1,2	EA	1									6	MP485
X2-F		A283 BRACKET: SM-C-531712 (80063)	1,2	EA	1									6	MP486
X2-F	5310-638-1254	A284 NUT: SM-B-531713 (80063)	1,2	EA	1									6	MP31
X2-F		A285 SETSCREW: SM-B-531714 (80063)	1,2	EA	1									6	MP487
P-O	6675-219-7197	A286 CELL ASSY: SM-B-531715 (80063)	1,2	EA	1	*	*	*	*	*	*	4	2	6	MP25
X2-F		A287 CELL: SM-B-531716 (80063)	1,2	EA	1									6	MP488
A-O-R		A288 LENS ASSY: (80063)	1,2	EA	1									6	MP489
X2-F		A289 RING, THREADED: SM-B-531720 (80063)	1,2	EA	1									6	MP490
X2-F		A290 NUT: SM-B-531721 (80063)	1,2	EA	1									6	MP491

SECTION V. REPAIR PARTS FOR DIRECT SUPPORT, GENERAL SUPPORT, AND DEPOT MAINTENANCE (CONTINUED)

(1) SMR CODE	(2) FEDERAL STOCK NUMBER	(3) DESCRIPTION	(4) UNIT OF MEAS	(5) QTY INC IN UNIT	(6) 30-DAY DS MAINT ALLOWANCE (A) (B) (C) 1-20 21-50 51-100	(7) 30-DAY GS MAINT ALLOWANCE (A) (B) (C) 1-20 21-50 51-100	(8) 1 YR ALW PER EQUIP CNTGNCY	(9) DEPOT MAINT ALW PER 100 EQUIP	(10) ILLUSTRATIONS (A) (B) FIG NO ITEM NO OR REFERENCE DESIGNATION			
X2-F		A291 SHAFT: SM-B-53172 (80063)	1,2	EA	1				6	MP492		
X2-F		A292 SCREW: SAME AS A282	1,2	EA	2				6	MP493, MP494		
X2-F		A293 HOUSING: SM-B-531723 (80063)	1,2	EA	1				6	MP495		
X2-F		A294 MIRROR: SM-B-531724 (80063)	1,2	EA	1				6	MP496		
X2-F	5305-145-6917	A295 SCREW, MACHINE: SAME AS A272	1,2	EA	2				6	MP497, MP498		
X2-F		A296 EL CIRCLE ASSY: SM-C-531725 (80063)	1,2	EA	1				5	MP499		
X2-F		A297 SCREW: SAME AS A282	1,2	EA	4				5	MP109 THRU MP112		
X2-F		A298 GUARD ASSY: SM-B-531728 (80063)	1,2	EA	1					MP500		
X2-F		A299 GUARD: SM-D-531729 (80063)	1,2	EA	1				5	MP501		
X2-F		A300 EL VERNIER ASSY: SM-B-531730 (80063)	1,2	EA	1				5	MP502		
X2-F	5305-338-4499	A301 SCREW: SM-B-531732 (80063)	1,2	EA	2				5	MP57, MP58		
X2-F	5305-515-8223	A302 SCREW: SM-B-531733 (80063)	1,2	EA	2				5	MP96, MP97		
P-C	6760-222-0178	A303 CAP, PROTECTIVE: SM-B-531735 (80063)	1,2	EA	1	*	*	*	4	2	7	MP3
X2-F	6675-356-5062	A304 COUNTERWEIGHT: SM-B-531736 (80063)	1,2	EA	1						7	MP503
X2-F		A305 TOP COVER: SM-B-5631738 (80063)	1,2	EA	1						7	MP504
X2-F		A306 BOT PRISM ASSY: SM-B-531739 (80063)	1,2	EA	1						10	
X2-F		A307 SCREW: 38-1-72-40 (63848)	1,2	EA	8						10	MP506 THRU MP513
X2-F		A308 PLATE ASSY: SM-B-531740 (80063)	1,2	EA	1							MP514
X2-F		A309 SCREW: SAME AS A221	1,2	EA	1						10	MP515
X2-F		A310 PLATE: SM-B-51741 (80063)	1,2	EA	1						10	MP516
X2-F	5305-322-4450	A311 SCREW, ADJUST: SAME AS A281	1,2	EA	2						10	MP44, MP45
P-D	6660-521-1446	A312 PRISM ASSY: SM-B-531742 (80063)	1,2	EA	1			4	2		10	MP42
X2-F		A313 PRISM: SM-B-531743 (80063)	1,2	EA	1						10	MP517
X2-F		A314 HOLDER ASSY: SM-C-531744 (80063)	1,2	EA	1						10	MP518
X2-F	6660-392-9691	A315 CLAMP: SM-B-531756 (80063)	1,2	EA	2						10	MP519, MP520
X2-F		A316 SCREW: 38-1-72-3F (63848)	1,2	EA	4						10	MP521 THRU MP524
A-O-R		A317 PINION ASSY: SM-B-531747 (80063)	1,2	EA	1						9	MP525
X2-F		A318 SCREW: SAME AS A064	1,2	EA	2						9	MP526, MP527
X2-F		A319 SCREW: SM-B-531751 (80063)	1,2	EA	1						9	MP55
X2-F		A320 FOCUSING KNOB: SM-B-531752 (80063)	1,2	EA	1						9	MP528

SECTION V. REPAIR PARTS FOR DIRECT SUPPORT, GENERAL SUPPORT, AND DEPOT MAINTENANCE (CONTINUED)

(1) SMR CODE	(2) FEDERAL STOCK NUMBER	(3) DESCRIPTION	(4) UNIT OF MEAS	(5) QTY INC IN UNIT	(6) 30-DAY DS MAINT ALLOWANCE (A) (B) (C) 1-20 21-50 51-100	(7) 30-DAY GS MAINT ALLOWANCE (A) (B) (C) 1-20 21-50 51-100	(8) 1 YR ALW PER EQUIP CNTGCTY	(9) DEPOT MAINT ALW PER 100 EQUIP	(10) ILLUSTRATIONS (A) (B) FIG NO ITEM NO OR REFERENCE DESIGNATION						
X2-F		A321 WASHER: SM-B-531753 (80063)	1,2	EA	1				9	MP87					
X2-F		A322 SADDLE: SM-B-531755 (80063)	1,2	EA	1				9	MP529					
X2-F		A323 SLIDE ASSY: SM-B-531756 (80063)	1,2	EA	1				5	MP530					
A-O-R		A324 LENS ASSY: SM-B-531758 (80063)	1,2	EA	1				5	MP531					
P-D	6675-219-7196	A325 LENS, -C-: SM-B-531759 (80063)	1,2	EA	1			4	5	5	MP44				
X2-F	5310-322-4439	A326 RING, THREADED: SM-B-531760 (80063)	1,2	EA	1					5	MP532				
X2-F		A327 CELL: SM-B-531761 (80063)	1,2	EA	1					5	MP33				
X2-F	5310-562-8279	A328 RING, THREADED: SM-B-531771 (80063)	1,2	EA	1					5	MP534				
A-O-R		A329 TUBE ASSY: SM-B-531762 (80063)	1,2	EA	1					7	MP535				
X2-F		A330 DIAPHRAGM: SM-B-531764 (80063)	1,2	EA	1						MP536				
P-O	6660-911-2306	A331 OBJECTIVE ASSY: SM-B-531765 (80063)	2	EA	1	*	*	*	*	4	2	7	MP537		
P-O	6675-219-7220	A332 LENS ASSY: SM-B-531766 (80063)	1,2	EA	1	*	*	*	*	4	2	7	MP80		
X2-F		A333 OBJECTIVE CELL: SM-B-531769 (80063)	1,2	EA	1							7	MP538		
X2-F		A334 RING, THREADED: SM-B-531770 (80063)	1,2	EA	1							7	MP539		
A-O-R		A336 BOX ASSY: SM-D-531783 (80063)	1,2	EA	1								MP541		
X2-F	5305-958-6365	A337 SCREW, MACHINE: MS3510-260 (96906)	1,2	EA	2							2	MP542, MP543		
X2-F		A338 TEENUT: 39-8-23-4S (63848)	1,2	EA	2								MP544, MP545		
X2-F	6675-508-9768	A340 CAP, EYEPiece: SAME AS A260	1,2	EA	1							5	MP7A		
X2-F		A341 SCREW, MACHINE: AN505-6-38 (88044)	1,2	EA	2								MP546, MP547		
X2-F		A342 TEENUT: SM-D-531783-5 (80063)	1,2	EA	2								MP548, MP549		
X2-F		A343 GROMMET: SM-C-531784-3 (80063)	1,2	EA	1								MP550		
P-C	6675-634-9312	A344 PIN, STRAIGHT HEADLESS: SC-B-88251 (80063)	1,2	EA	2	*	2	2	*	2	2	13	10	4	MP101
P-O	6240-797-2650	A345 LAMP: SAME AS A140	1,2	EA	1	REF	REF	REF	REF	REF	REF	REF	REF	4	DS2A
X2-F	5305-013-0193	A347 SCREW, WOOD: MS35495-40 (96906)	1,2	EA	3										MP552, MP553, MP554
X2-F	5305-265-4564	A348 SCREW, WOOD: MS35495-45 (96906)	1,2	EA	3										MP555, MP556, MP557
X2-F	5305-958-6365	A349 SCREW, MACHINE: SAME AS A337	1,2	EA	2										MP558, MP559
X2-F		A350 TEENUT: SAME AS A342	1,2	EA	2										MP560, MP561
X2-F		A351 SHEATH, LEATHER: SC-B-9079 (80063)	1,2	EA	1									4	MP562
X2-F		A352 SCREW, WOOD: SM-D-531783-9 (80063)	1,2	EA	4									4	MP563 THRU MP566

SECTION V. REPAIR PARTS FOR DIRECT SUPPORT, GENERAL SUPPORT, AND DEPOT MAINTENANCE (CONTINUED)

(1) SMR CODE	(2) FEDERAL STOCK NUMBER	(3) DESCRIPTION	(4) UNIT OF MEAS	(5) QTY INC IN UNIT	(6) 30-DAY DS MAINT ALLOWANCE (A) (B) (C) 1-20 21-50 51-100	(7) 30-DAY GS MAINT ALLOWANCE (A) (B) (C) 1-20 21-50 51-100	(8) 1 YR ALW PER EQUIP CNTGNCY	(9) DEPOT MAINT ALW PER 100 EQUIP	(10) ILLUSTRATIONS (A) (B) FIG NO ITEM NO OR REFERENCE DESIGNATION				
X2-F		A353 CORNER, CASE: MS35354 (96906)	1,2	EA	4				4	MP567 THRU MP570			
X2-F		A354 CORNER, R-TOP: 6061-178 (63848)	1,2	EA	1				4	MP571			
X2-F		A355 CORNER, R-BOT: 6061-179 (63848)	1,2	EA	1				4	MP572			
X2-F		A356 CORNER, CASE, L: MS35254REV (96906)	1,2	EA	2				4	MS573, MP574			
X2-F		A357 SCREW, WOOD: SM-D-531783-13 (80063)	1,2	EA	22				4	MP575 THRU MP596			
X2-F		A358 PAD: SM-D-531783-1 (80063)	1,2	EA	1					MP597			
X2-F		A359 PAD: SM-D-531783-52 (80063)	1,2	EA	1					MP598			
X2-F		A360 PAD: SM-D-531783-3 (80063)	1,2	EA	2					MP599, MP600			
X2-F		A361 BRACKET ANGLE: SM-D-531783-4 (80063)	1,2	EA	4				4	MP601 THRU MP604			
X2-F		A362 SCREW, WOOD: MS35494-45 (96906)	1,2	EA	16				4	MP506 THRU MP620			
X2-F		A363 HANDLE: SM-D-531783-11 (80063)	1,2	EA	1				4	MP621			
X2-F		A364 RIVET: SM-D-531783-12 (80063)	1,2	EA	4				4	MP622 THRU MP625			
X2-F		A365 BUMPER, RUBBER: SM-D-531783-8 (80063)	1,2	EA	4				4	MP626 THRU MP629			
X2-F	5305-265-4503	A366 SCREW, WOOD: MS35495-111 (96906)	1,2	EA	4				4	MP630 THRU MP633			
X2-F		A367 PAD: SC-C-9081-1 (80063)	1,2	EA	1					MP634			
X2-F	5305-265-4453	A369 SCREW, WOOD: MS35495-23 (96906)	1,2	EA	1				4	MP636			
X2-F		A371 CLIP W/DRIVE: SM-B-531792 (80063)	1,2	EA	1				4	MP638			
X2-F		A372 LOCK: SM-D-531782-1 (80063)	1,2	EA	1				4	MP639			
X2-F		A373 STRIKE: SM-D-531782-2 (80063)	1,2	EA	1				4	MP640			
X2-F	5305-249-2675	A374 SCREW, WOOD: SAME AS A362	1,2	EA	16				4	MP641 THRU MP656			
X2-F		A375 HOOK: SM-D-531782-4 (80063)	EA	1,2	2				4	MP657, MP658			
X2-F		A376 KEEPER: SM-D-531782-4 (80063)	1,2	EA	2				4	MP659, MP660			
X2-F		A378 BASEBOARD: SM-C-531788 (80063)	1,2	EA	1				19	MP28			
X2-F	6660-911-2380	A379 PLATE, BASE: SC-C-88247 (80063)	1,2	EA	1				19	MP662			
X2-F	5305-954-2728	A380 SCREW, MACHINE: MS35190-255 (96906)	1,2	EA	3				19	MP663, MP664, MP665			
X2-F		A381 TERNUT: SM-D-531787-1 (80063)	1,2	EA	3				19	MP666, MP667, MP668			
X2-F	5305-254-0091	A383 SCREW, WOOD: MS35494-61 (96906)	1,2	EA	2					MP669, MP670			
P-O	5340-322-4618	A383A CATCH, FASTNER: 6061-82 (65263)	1	EA	1	*	*	*	*	4	2		
P-C	6675-356-5225	A384 HOOD, CANVAS: SC-B-88249 (80063)	1,2	EA	1	*	*	*	*	4	2	4	MP671

SECTION VII. INDEX-FEDERAL STOCK NUMBER CROSS REFERENCE

TO FIGURE AND ITEM NUMBER OR REFERENCE DESIGNATION

FEDERAL STOCK NUMBER	FIGURE NUMBER	ITEM NUMBER OR REF DESIGNATION	FEDERAL STOCK NUMBER	FIGURE NUMBER	ITEM NUMBER OR REF DESIGNATION
3120-662-3124	15	MP251	5305-265-4564		MP556
3120-662-3124	17	MP299	5305-265-4564		MP557
4730-203-6580	5	MP59	5305-282-9490	15	MP238
5305-013-0193		MP552	5305-282-9490	15	MP239
5305-013-0193		MP553	5305-282-9490	15	MP240
5305-013-0193		MP554	5305-282-9490	15	MP241
5305-032-5527	17	MP46	5305-282-9490	15	MP246
5305-032-5527	15	MP47	5305-282-9490	15	MP247
5305-042-1373		MP426	5305-282-9490	17	MP273
5305-042-1373		MP427	5305-282-9490	17	MP274/
5305-042-1373		MP428	5305-282-9490	17	MP275
5305-042-1373	18	MP434	5305-282-9490	17	MP294
5305-042-1373	18	MP435	5305-282-9490	17	MP295
5305-042-1373	18	MP436	5305-297-9106	18	MP92
5305-042-1375	3	MP404	5305-297-9106	18	MP117
5305-042-1375	3	MP405	5305-322-4450	10	MP44
5305-042-1375	3	MP406	5305-322-4450	10	MP45
5305-052-5949	15	MP258	5305-322-4450	6	MP484
5305-052-5949	7	MP306	5305-338-4499	5	MP57
5305-145-6917	9	MP479	5305-338-4499	5	MP58
5305-145-6917	6	MP497	5305-448-8119	5	MP103
5305-145-6917	6	MP498	5305-448-8119	5	MP104
5305-145-7690	20	MP208	5305-448-8119	5	MP105
5305-145-7690	20	MP209	5305-448-8119	5	MP106
5305-145-7690	20	MP210	5305-515-8223	5	MP96
5305-145-7690	20	MP211	5305-515-8223	5	MP97
5305-207-6371	18	MP65	5305-524-0228	12	MP50
5305-207-7488	17	MP279	5305-537-8583	15	MP48
5305-207-7488		MP352	5305-537-8583	17	MP49
5305-207-7488		MP365	5305-637-6643	16	MP103
5305-249-2675	4	MP605	5305-637-6643	16	MP103A
5305-249-2675	4	MP606	5305-637-6643	14	MP103B
5305-249-2675	4	MP607	5305-637-6643	14	MP103C
5305-249-2675	4	MP608	5305-637-9770	16	MP62/
5305-249-2675	4	MP609	5305-637-9770	14	MP63
5305-249-2675	4	MP610	5305-638-7534	12	MP102
5305-249-2675	4	MP611	5305-639-3409	12	MP33
5305-249-2675	4	MP612	5305-811-9463	2	MP374
5305-249-2675	4	MP613	5305-811-9463	2	MP375
5305-249-2675	4	MP614	5305-823-5821	15	MP253
5305-249-2675	4	MP615	5305-823-5821	17	MP302
5305-249-2675	4	MP616	5305-954-2728	19	MP663
5305-249-2675	4	MP617	5305-954-2728	19	MP664
5305-249-2675	4	MP618	5305-954-2728	19	MP665
5305-249-2675	4	MP619	5305-958-6365		MP542
5305-249-2675	4	MP620	5305-958-6365		MP543
5305-249-2675	4	MP641	5305-958-6365		MP558
5305-249-2675	4	MP642	5305-958-6365		MP559
5305-249-2675	4	MP643	5307-322-4554	15	MP77
5305-249-2675	4	MP644	5307-322-4554	15	MP78
5305-249-2675	4	MP645	5307-322-4554	17	MP128
5305-249-2675	4	MP646	5307-322-4554	17	MP129
5305-249-2675	4	MP647	5310-167-1356	17	MP277
5305-249-2675	4	MP648	5310-167-1367	2	MP354
5305-249-2675	4	MP649	5310-167-1367	2	MP367
5305-249-2675	4	MP650	5310-167-1367	2	MP379
5305-249-2675	4	MP651	5310-208-3356	15	MP29
5305-249-2675	4	MP652	5310-208-3356	15	MP30
5305-249-2675	4	MP653	5310-208-3356	17	MP119
5305-249-2675	4	MP654	5310-208-3356	17	MP120
5305-249-2675	4	MP655	5310-208-3726	16	MP35
5305-249-2675	4	MP656	5310-322-4439	5	MP532
5305-254-0091		MP669	5310-392-2043	13	MP114
5305-254-0091		MP670	5310-545-8305	16	MP34
5305-265-4453	4	MP636	5310-562-8279	5	MP534
5305-265-4503	4	MP630	5310-595-5481	20	MP95
5305-265-4503	4	MP631	5310-595-6480	15	MP257
5305-265-4503	4	MP632	5310-595-6480	17	MP303
5305-265-4503	4	MP633	5310-595-7083	15	MP85
5305-265-4564		MP555	5310-595-7083	15	MP86

SECTION VII. INDEX-FEDERAL STOCK NUMBER CROSS REFERENCE

TO FIGURE AND ITEM NUMBER OR REFERENCE DESIGNATION (CONTINUED)

FEDERAL STOCK NUMBER	FIGURE NUMBER	ITEM NUMBER OR REF DESIGNATION	FEDERAL STOCK NUMBER	FIGURE NUMBER	ITEM NUMBER OR REF DESIGNATION
5310-595-7083	17	MP130	6675-356-5062	7	MP503
5310-595-7083	17	MP131	6675-356-5225	4	MP671
5310-595-7762	5	MP81	6675-392-9732	15	MP75
5310-595-7762	5	MP82	6675-392-9734	15	MP76
5310-595-7762	5	MP83	6675-392-9734	17	MP126
5310-595-7762	5	MP84	6675-396-3466	20	MP214
5310-638-1254	6	MP31	6675-448-8168	2	MP27
5310-638-4112	11	MP32	6675-448-8169	2	MP14
5315-041-4186	8	MP206	6675-508-9768	5	MP7
5315-041-4186	8	MP207	6675-508-9768	5	MP7A
5330-290-8549	3	MP416	6675-530-2038	20	MP220
5330-291-9949	2	MP351	6675-597-9842	3	E1
5330-291-9949	2	MP364	6675-597-9843	18	MP93
5330-291-9949	2	MP381	6675-597-9843	18	MP118
5340-356-5202	16	MP71	6675-634-9312	4	MP101
5340-356-5202	14	MP127	6675-663-3387	12	MP70
5355-667-9336	2	MP113	6675-663-3388	18	MP99
5905-642-5355	2	R1	6675-663-3388	18	MP100
5930-396-3467	2	S2	6675-663-3388	18	MP430
5940-374-3313	2	MP330	6675-663-3388	18	MP439
5940-374-3313	2	MP331	6760-222-0178	7	MP3
5970-322-5201	3	MP413			
6135-306-2354	2	MP345	REFERENCE	MFG	FIG.
6210-319-0824	2	XDS2	NO.	CODE	NO.
6240-797-2650	2	DS1			ITEM NO. OR
6240-797-2650	2	DS2			REF. DESIG.
6240-797-2650	4	DS2A	AN505-6-38	88044	MP546
6240-797-2650	2	DS3	AN505-6-38	88044	MP547
6250-299-4238	2	MP360	AN515UB2-2	88044	2
6250-299-4238	2	MP373	AN515UB2-2	88044	2
6250-299-4238	2	MP384	AN515UB2-2	88044	2
6250-299-4238	2	XDS1	AN515UB2-2	88044	2
6650-092-1558	6	MP6	AN515UB2-2	88044	2
6650-448-8290	5	MP43	AN515UB2-2	88044	2
6660-031-3069	11	MP72	AN515UB2-2	88044	2
6660-392-9681	3	MP414	AN515UB2-2	88044	2
6660-392-9691	10	MP519	AN515UB2-2	88044	2
6660-392-9691	10	MP520	AN515UB2-6	88044	17
6660-392-9733	15	MP245	AN960B2L	88044	17
6660-392-9733	17	MP293	MS35246-23	96906	3
6660-396-3464	6	MP481	MS35246-23	96906	3
6660-448-8292	2	MP387	MS35254REV	96906	4
6660-448-8296	5	MP5	MS35254REV	96906	4
6660-521-1443	18	MP9	MS35254	96906	4
6660-521-1443	18	MP10	MS35254	96906	4
6660-521-1446	10	MP42	MS35254	96906	4
6660-664-6227	6	MP56	MS35254	96906	4
6660-911-2306	7	MP537	SC-B-9079	80063	4
6660-911-2307	2	XDS3	SC-C-9081-1	80063	
6660-911-2308	18	MP312	SM-B-531512	80063	18
6660-911-2308	18	MP316	SM-B-531517	80063	18
6660-911-2380	19	MP662	SM-B-531517	80063	18
6675-212-8025	12	MP22	SM-B-531524	80063	18
6675-219-7187	20	MP213	SM-B-531532	80063	17
6675-219-7192	20	MP222	SM-B-531534	80063	17
6675-219-7193	13	MP17	SM-B-531535	80063	17
6675-219-7193	13	MP18	SM-B-531536	80063	17
6675-219-7193	13	MP19	SM-B-531537	80063	17
6675-219-7193	13	MP20	SM-B-531538	17	17
6675-219-7194	5	MP3	SM-B-531540	80063	17
6675-219-7195	2	MP24	SM-B-531543	80063	15
6675-219-7196	5	MP44	SM-B-531543	80063	17
6675-219-7197	6	MP25	SM-B-531546	80063	15
6675-219-7199	5	MP475	SM-B-531546	80063	17
6675-219-7217	13	MP66	SM-B-531548	80063	17
6675-219-7217	13	MP67	SM-B-531549	80063	15
6675-219-7217	13	MP68	SM-B-531549	80063	17
6675-219-7217	13	MP69	SM-B-531552	80063	17
6675-219-7220	7	MP80	SM-B-531553	80063	15
6675-322-4487	12	MP64	SM-B-531553	80063	17

SECTION VII. INDEX-FEDERAL STOCK NUMBER CROSS REFERENCE

TO FIGURE AND REFERENCE CODE	ITEM NUMBER OR MFG	OR REFERENCE FIG NO	DESIGNATION (CONTINUED) ITEM NO OR REF DESIG	REFERENCE NO	MFG CODE	FIG NO	ITEM NO OR REF DESIG
SM-B-531556	80063	3	MP395	SM-B-531674	80063	2	MP355
SM-B-531560	80063	3	MP397	SM-B-531674	80063	2	MP368
SM-B-531560	80063	3	MP398	SM-B-531674	80063	2	MP376
SM-B-531561	80063	3	MP399	SM-B-531675	80063	2	MP356
SM-B-531562	80063	3	MP400	SM-B-531675	80063	2	MP369
SM-B-531562	80063	3	MP401	SM-B-531675	80063	2	MP377
SM-B-531563	80063	3	MP402	SM-B-531676	80063	2	MP357
SM-B-531564	80063	3	MP403	SM-B-531676	80063	2	MP370
SM-B-531566	80063	3	MP407	SM-B-531676	80063	2	MP378
SM-B-531568	80063		MP410	SM-B-531678	80063		MP358
SM-B-531569	80063	3	MP411	SM-B-531678	80063		MP371
SM-B-531570	80063		MP412	SM-B-531678	80063		MP382
SM-B-531573	80063	3	MP415	SM-B-531679	80063		MP359
SM-B-531575	80063	3	MP417	SM-B-531679	80063		MP372
SM-B-531575	80063	3	MP418	SM-B-531679	80063		MP236
SM-B-531579	80063	2	S2	SM-B-531685	80063	15	MP254
SM-B-531580	80063	2	MP335	SM-B-531686	80063	15	MP255
SM-B-531580	80063	2	MP337	SM-B-531692	80063	5	MP26
SM-B-531581	80063	2	MP338	SM-B-531693	80063	5	MP98
SM-B-531581	80063	2	MP339	SM-B-531694	80063	5	MP7
SM-B-531581	80063	2	MP340	SM-B-531695	80063	5	MP474
SM-B-531584	80063	2	MP115	SM-B-531697	80063	5	MP476
SM-B-531587	80063	18	MP421	SM-B-531698	80063	5	MP477
SM-B-531590	80063	18	MP425	SM-B-531701	80063	5	MP478
SM-B-531592	80063	18	MP431	SM-B-531708	80063		MP4482
SM-B-531592	80063	18	MP437	SM-B-531709	80063		MP41
SM-B-531593	80063	18	MP432	SM-B-531714	80063	6	MP487
SM-B-531593	80063	18	MP440	SM-B-531716	80063	6	MP488
SM-B-531596	80063	16	MP41	SM-B-531717	80063	6	MP489
SM-B-531608	80063	18	MP433	SM-B-531720	80063	6	MP490
SM-B-531609	80063	18	MP438	SM-B-531721	80063	6	MP491
SM-B-531616	80063		MP458	SM-B-531722	80063	6	MP492
SM-B-531622	80063	11	MP459	SM-B-531723	80063	6	MP495
SM-B-531623	80063	11	MP460	SM-B-531724	80063	6	MP496
SM-B-531623	80063	11	MP461	SM-B-531728	80063		MP500
SM-B-531623	80063	11	MP462	SM-B-531730	80063	5	MP502
SM-B-531623	80063	11	MP463	SM-B-531738	80063	7	MP504
SM-B-531627	80063	11	MP261	SM-B-531740	80063		MP514
SM-B-531627	80063	11	MP262	SM-B-531741	80063	10	MP516
SM-B-531627	80063	11	MP263	SM-B-531743	80063	10	MP517
SM-B-531627	80063	11	MP264	SM-B-531747	80063	9	MP525
SM-B-531628	80063	12	MP469	SM-B-531751	80063	9	MP55
SM-B-531638	80063	3	MP471	SM-B-531752	80063	9	MP528
SM-B-531639	80063	13	MP36	SM-B-531753	80063	9	MP87
SM-B-531639	80063	13	MP37	SM-B-531755	80063	9	MP529
SM-B-531639	80063	13	MP38	SM-B-531756	80063	5	MP530
SM-B-531639	80063	13	MP39	SM-B-531758	80063	5	MP531
SM-B-531646	80063	11	MP472	SM-B-531761	80063	5	MP533
SM-B-531648	80063	18	MP473	SM-B-531762	80063	7	MP535
SM-B-531650	80063	2	MP332	SM-B-531764	80063		MP536
SM-B-531650	80063	2	MP333	SM-B-531769	80063	7	MP538
SM-B-531650	80063	2	MP334	SM-B-531770	80063	7	MP539
SM-B-531651	80063	20	MP212	SM-B-531773	80063	2	MP380
SM-B-531653	80063	20	MP231	SM-B-531774	80063	2	MP385
SM-B-531654	80063		MP231	SM-B-531775	80063	2	MP386
SM-B-531655	80063		MP233	SM-B-531778	80063	8	MP204
SM-B-531656	80063		MP234	SM-B-531779	80063	8	MP205
SM-B-531657	80063		MP235	SM-B-531792	80063	4	MP638
SM-B-531659	80063	20	MP230	SM-C-531518	80063	18	MP314
SM-B-531663	80063	20	MP219	SM-C-531525	80063	18	MP318
SM-B-531665	80063	20	MP221	SM-C-531528	80063	17	MP271
SM-B-531668	80063	20	MP223	SM-C-531539	80063	17	MP291
SM-B-531669	80063	20	MP224	SM-C-531559	80063	3	MP396
SM-B-531670	80063	20	MP225	SM-C-531576	80063	2	MP320
SM-B-531671	80063	2	MP350	SM-C-531591	80063	18	MP429
SM-B-531671	80063	2	MP363	SM-C-531614	80063	11	MP457
SM-B-531673	80063	2	MP353	SM-C-531624	80063	11	MP464
SM-B-531673	80063	2	MP366	SM-C-531629	80063	13	MP470

SECTION VII. INDEX-FEDERAL STOCK NUMBER CROSS REFERENCE

TO FIGURE AND ITEM NUMBER OR REFERENCE DESIGNATION (CONTINUED)	REFERENCE	MFG	FIG	ITEM NO OR	REFERENCE	MFG	FIG	ITEM NO OR
REFERENCE	CODE	NO	NO	REF DESIG	NO	CODE	NO	REF DESIG
SM-C-531662	80063	20		MP218	38-1-72-1-5F	63848	20	MP217
SM-C-531682	80063	15		MP237	38-1-72-1F	63848	20	MP226
SM-C-531684	80063			MP242	38-1-72-1F	63848	20	MP227
SM-C-531712	80063	6		MP486	38-1-72-1F	63848	20	MP228
SM-C-531725	80063	5		MP499	38-1-72-1F	63848	20	MP229
SM-C-531744	80063	10		MP518	38-1-72-2-5F	63848	17	MP287
SM-C-531777	80063	8		MP203	38-1-72-2-5F	63848	17	MP288
SM-C-531784-3	80063			MP550	38-1-72-2-5F	63848	17	MP289
SM-C-531788	80063	19		MP28	38-1-72-2-5F	63848	17	MP290
SM-D-531649	80063	8		MP40	38-1-72-30	47705	6	MP480
SM-D-531729	80063	5		MP501	38-1-72-3F	63848	10	MP521
SM-D-531782-1	80063	4		MP639	38-1-72-3F	63848	10	MP522
SM-D-531782-2	80063	4		MP640	38-1-72-3F	63848	10	MP523
SM-D-531782-4	80063	4		MP657	38-1-72-3F	63848	10	MP524
SM-D-531782-4	80063	4		MP658	38-1-72-40	63848	10	MP506
SM-D-531782-5	80063	4		MP659	38-1-72-40	63848	10	MP507
SM-D-531782-5	80063	4		MP660	38-1-72-40	63848	10	MP508
SM-D-531783	80063			MP541	38-1-72-40	63848	10	MP509
SM-D-531783-1	80063			MP597	38-1-72-40	63848	10	MP510
SM-D-531783-2	80063			MP598	38-1-72-40	63848	10	MP511
SM-D-531783-3	80063			MP599	38-1-72-40	63848	10	MP512
SM-D-531783-3	80063			MP600	38-1-72-40	63848	10	MP513
SM-D-531783-4	80063	4		MP601	38-2-56-40	63848	17	MP281
SM-D-531783-4	80063	4		MP602	38-2-56-40	63848	17	MP282
SM-D-531783-4	80063	4		MP603	38-2-56-40	63848	2	MP341
SM-D-531783-4	80063	4		MP604	38-2-56-40	63848	2	MP342
SM-D-531783-5	80063			MP548	38-2-56-40	63848	2	MP343
SM-D-531783-5	80063			MP549	38-2-56-40	63848	2	MP344
SM-D-531783-5	80063			MP560	38-2-56-50	63848		MP408
SM-D-531783-5	80063			MP561	38-2-56-50	63848		MP409
SM-D-531783-8	80063	4		MP626	38-3-36-6F	63848	14	MP453
SM-D-531783-8	80063	4		MP627	38-3-36-6F	63848	14	MP454
SM-D-531783-8	80063	4		MP628	38-3-36-6F	63848	14	MP455
SM-D-531783-8	80063	4		MP629	38-3-36-6F	63848	14	MP456
SM-D-531783-9	80063	4		MP563	38-3-56-2F	63848	2	MP321
SM-D-531783-9	80063	4		MP564	38-3-56-2F	63848	2	MP322
SM-D-531783-9	80063			MP565	38-3-56-2F	63848	2	MP323
SM-D-531783-9	80063	4		MP566	38-3-56-2F	63848	2	MP324
SM-D-531783-11	80063	4		MP621	38-3-56-30	63848	17	MP267
SM-D-531783-12	80063	4		MP622	38-3-56-30	63848	17	MP268
SM-D-531783-12	80063	4		MP623	38-3-56-30	63848	9	MP526
SM-D-531783-12	80063	4		MP624	38-3-56-30	63848	9	MP527
SM-D-531783-12	80063	4		MP625	38-3-56-40	63848		MP265
SM-D-531783-13	80063	4		MP575	38-3-56-40	63848		MP266
SM-D-531783-13	80063	4		MP576	38-3-56-4FF	63848	15	MP259
SM-D-531783-13	80063	4		MP577	38-3-56-4FF	63848	17	MP307
SM-D-531783-13	80063	4		MP578	38-4-48-2-5F	63848	15	MP250
SM-D-531783-13	80063	4		MP579	38-4-48-2-5F	63848	17	MP298
SM-D-531783-13	80063	4		MP580	38-4-48-3F	63848	15	MP243
SM-D-531783-13	80063	4		MP581	38-4-48-3F	63848	15	MP244
SM-D-531783-13	80063	4		MP582	38-4-48-3F	63848	17	MP269
SM-D-531783-13	80063	4		MP583	38-4-48-3F	63848	17	MP270
SM-D-531783-13	80063	4		MP584	38-4-48-3F	63848	18	MP422
SM-D-531783-13	80063	4		MP585	38-4-48-3F	63848	18	MP423
SM-D-531783-13	80063	4		MP586	38-4-48-3F	63848	18	MP424
SM-D-531783-13	80063	4		MP587	38-4-48-40	63848	8	MP201
SM-D-531783-13	80063	4		MP588	38-4-48-40	63848	8	MP202
SM-D-531783-13	80063	4		MP589	38-4-48-40	63848	18	MP308
SM-D-531783-13	80063	4		MP590	38-4-48-40	63848	18	MP209
SM-D-531783-13	80063	4		MP591	38-4-48-40	63848	18	MP310
SM-D-531783-13	80063	4		MP592	38-4-48-40	63848	18	MP311
SM-D-531783-13	80063	4		MP593	38-4-48-4F	63848	18	MP315
SM-D-531783-13	80063	4		MP594	38-4-48-4F	63848	18	MP319
SM-D-531783-13	80063	4		MP595	38-4-48-50	63848	3	MP391
SM-D-531783-13	80063	4		MP596	38-4-48-50	63848	3	MP392
SM-D-531787-1	80063	19		MP666	38-4-48-50	63848	3	MP393
SM-D-531787-1	80063	19		MP667	38-4-48-50	63848	3	MP394
SM-D-531787-1	80063	19		MP668	38-5-44-100	63848	5	MP450
38-1-72-1-5F	63848	20		MP215	38-5-44-100	63848	5	MP451
38-1-72-1-5F	63848	20		MP216	38-5-44-45F	63848	5	MP109

SECTION VII. INDEX-FEDERAL STOCK NUMBER CROSS REFERENCE

TO FIGURE AND ITEM NUMBER OR REFERENCE DESIGNATION (CONTINUED)

MFG. NO.	CODE	FIG. NO.	ITEM NO. OR REF. DESIG.
38-5-44-45F	63848	5	MP110
38-5-44-45F	63848	5	MP111
38-5-44-45F	63848	5	MP112
38-5-44-45F	63848	6	MP485
38-5-44-45F	63848	6	MP493
38-5-44-45F	63848	6	MP494
38-5-44-50	63848	3	MP491
38-5-44-50	63848	3	MP420
38-6-40-10F	63848	15	MP88
38-6-40-10F	63848	15	MP89
38-8-36-4-5FF	63848	11	MP465
38-8-36-4-5FF	63848	11	MP466
38-8-36-4-5FF	63848	11	MP467
38-8-36-4-5FF	63848	11	MP468
38-8-36-5F	63848	16	MP442
38-8-36-5F	63848	16	MP443
38-8-36-5F	63848	16	MP444
38-8-36-5F	63848	16	MP445
38-8-36-5F	63848	16	MP446
38-8-36-5F	63848	16	MP447
38-8-36-5F	63848	16	MP448
38-8-36-5F	63848	16	MP449
38-8-36-5F	63848	10	MP515
39-8-32-4S	63848		MP544
39-8-32-4S	63848		MP545
6061-178	63848	4	MP571
6061-179	63848	4	MP572

**SECTION VIII. INDEX-REFERENCE DESIGNATION
CROSS REFERENCE TO PAGE NUMBER**

REFERENCE DESIGNATION	PAGE NUMBER	REFERENCE DESIGNATION	PAGE NUMBER	REFERENCE DESIGNATION	PAGE NUMBER
DS1	3,10	MP81	14	MP224	5
DS2	2,10	MP82	14	MP225	5
DS2A	4,16	MP83	14	MP226	5
DS3	2,9	MP84	14	MP227	5
E1	11	MP85	2,6	MP228	5
MP3	4,13	MP86	2,6	MP229	5
MP5	2,5	MP87	16	MP230	2,5
MP6	14	MP88	6	MP231	2,5
MP7	13	MP89	6	MP233	6
MP7A	16	MP92	2,8	MP234	6
MP9	2,8	MP93	2,8	MP235	6
MP10	2,8	MP95	5	MP236	2,6
MP14	10	MP96	15	MP237	6
MP17	3,13	MP97	15	MP238	6
MP18	3,13	MP98	13	MP239	6
MP19	3,13	MP99	2,8	MP240	6
MP20	3,13	MP100	2,8	MP241	6
MP22	12	MP101	4,16	MP242	2,6
MP24	9	MP102	3,13	MP243	6
MP25	3,14	MP103	3,12	MP244	6
MP26	3,13	MP103A	3,12	MP245	6
MP27	9	MP103B	3,12	MP246	6
MP28	17	MP103C	3,12	MP247	6
MP29	2,6	MP104	14	MP248	2,6
MP30	2,6	MP105	14	MP249	6
MP31	14	MP106	14	MP250	6
MP32	12	MP109	15	MP251	6
MP33	3,13	MP110	15	MP252	6
MP34	3,12	MP111	15	MP253	6
MP35	3,12	MP112	15	MP254	6
MP36	3,13	MP113	2,9	MP255	6
MP37	3,13	MP114	12	MP256	6
MP38	3,13	MP115	9	MP257	7
MP39	3,13	MP117	2,8	MP258	7
MP40	13	MP118	2,8	MP259	7
MP41	14	MP119	7	MP260	7
MP42	15	MP120	7	MP261	7
MP43	14	MP126	7	MP262	7
MP44	15	MP127	3,12	MP263	7
MP45	15	MP128	7	MP264	7
MP46	8	MP129	7	MP265	7
MP47	6	MP130	2,7	MP266	7
MP48	6	MP131	2,7	MP267	7
MP49	8	MP201	5	MP268	7
MP5C	3,13	MP202	5	MP269	7
MP55	15	MP203	5	MP270	7
MP56	14	MP204	5	MP271	7
MP57	15	MP205	5	MP272	7
MP58	15	MP206	5	MP273	7
MP59	13	MP207	5	MP274	7
MP62	3,12	MP208	5	MP275	7
MP63	3,12	MP209	5	MP276	7
MP64	3,13	MP210	5	MP277	7
MP65	13	MP211	5	MP278	7
MP66	13	MP212	5	MP279	7
MP67	13	MP213	5	MP280	2,7
MP68	13	MP214	5	MP281	7
MP69	13	MP215	5	MP282	7
MP70	3,13	MP216	5	MP283	7
MP71	3,12	MP217	5	MP284	7
MP72	13	MP218	5	MP285	7
MP75	6	MP219	5	MP286	7
MP76	6	MP220	5	MP287	7
MP77	6	MP221	5	MP288	7
MP78	6	MP222	5	MP289	7
MP80	4,16	MP223	5	MP290	7

**SECTION VIII. INDEX-REFERENCE DESIGNATION
CROSS REFERENCE TO PAGE NUMBER (CONTINUED)**

REFERENCE DESIGNATION	PAGE NUMBER	REFERENCE DESIGNATION	PAGE NUMBER	REFERENCE DESIGNATION	PAGE NUMBER
MP291	2,7	MP357	9	MP424	11
MP292	7	MP358	2,10	MP425	3,12
MP293	7	MP359	10	MP426	12
MP294	8	MP360	10	MP427	12
MP295	8	MP361	10	MP428	12
MP296	2,8	MP362	10	MP429	12
MP297	8	MP363	10	MP430	3,12
MP298	8	MP364	10	MP431	12
MP299	8	MP365	10	MP432	3,12
MP300	8	MP366	10	MP433	3,12
MP301	8	MP367	10	MP434	12
MP302	8	MP368	2,10	MP435	12
MP303	8	MP369	10	MP436	12
MP304	8	MP370	10	MP437	12
MP305	8	MP371	3,10	MP438	12
MP306	8	MP372	10	MP439	3,12
MP307	8	MP373	10	MP440	3,12
MP308	8	MP374	10	MP441	3,12
MP309	8	MP375	10	MP442	12
MP310	8	MP376	3,10	MP443	12
MP311	8	MP377	10	MP444	12
MP312	2,8	MP378	10	MP445	12
MP313	8	MP379	10	MP446	12
MP314	8	MP380	10	MP447	12
MP315	8	MP381	10	MP448	12
MP316	2,8	MP382	3,10	MP449	12
MP317	8	MP383	10	MP450	12
MP318	8	MP384	10	MP451	12
MP319	9	MP385	3,10	MP453	12
MP320	2,9	MP386	11	MP454	12
MP321	9	MP387	11	MP455	12
MP322	9	MP389	11	MP456	12
MP323	9	MP390	11	MP457	3,12
MP324	9	MP391	11	MP458	12
MP325	9	MP392	11	MP459	13
MP326	9	MP393	11	MP460	13
MP327	9	MP394	11	MP461	13
MP328	9	MP395	11	MP462	13
MP329	9	MP396	11	MP463	13
MP330	9	MP397	11	MP464	3,13
MP331	9	MP398	11	MP465	13
MP332	9	MP399	11	MP466	13
MP333	9	MP400	11	MP467	13
MP334	9	MP401	11	MP468	13
MP335	9	MP402	11	MP469	13
MP336	9	MP403	11	MP470	13
MP337	9	MP404	11	MP471	13
MP338	9	MP405	11	MP472	13
MP339	9	MP406	11	MP473	13
MP340	9	MP407	3,11	MP474	14
MP341	9	MP408	11	MP475	14
MP342	9	MP409	11	MP476	14
MP343	9	MP410	11	MP477	3,14
MP344	9	MP411	3,11	MP478	14
MP345	9	MP412	11	MP479	14
MP346	9	MP413	11	MP480	14
MP347	9	MP414	11	MP481	14
MP348	9	MP415	11	MP482	14
MP349	9	MP416	11	MP483	14
MP350	9	MP417	11	MP485	14
MP351	9	MP418	11	MP486	14
MP352	9	MP419	11	MP487	14
MP353	9	MP420	11	MP488	14
MP354	9	MP421	3,11	MP489	3,14
MP355	2,9	MP422	11	MP490	14
MP356	9	MP423	11	MP491	14

SECTION VIII. INDEX-REFERENCE DESIGNATION
CROSS REFERENCE TO PAGE NUMBER (CONTINUED)

REFERENCE DESIGNATION	PAGE NUMBER	REFERENCE DESIGNATION	PAGE NUMBER	REFERENCE DESIGNATION	PAGE NUMBER
MP492	15	MP561	16	MP627	17
MP493	15	MP562	16	MP628	17
MP494	15	MP563	16	MP629	17
MP495	15	MP564	16	MP630	17
MP496	15	MP565	16	MP631	17
MP497	15	MP566	16	MP632	17
MP498	15	MP567	17	MP633	17
MP499	15	MP568	17	MP634	17
MP500	15	MP569	17	MP636	17
MP501	15	MP570	17	MP638	17
MP502	15	MP571	17	MP639	17
MP503	15	MP572	17	MP640	17
MP504	15	MP573	17	MP641	17
MP506	15	MP574	17	MP642	17
MP507	15	MP575	17	MP643	17
MP508	15	MP576	17	MP644	17
MP509	15	MP577	17	MP645	17
MP510	15	MP578	17	MP646	17
MP511	15	MP579	17	MP647	17
MP512	15	MP580	17	MP648	17
MP513	15	MP581	17	MP649	17
MP514	15	MP582	17	MP650	17
MP515	15	MP583	17	MP651	17
MP516	15	MP584	17	MP652	17
MP517	15	MP585	17	MP653	17
MP518	15	MP586	17	MP654	17
MP519	15	MP587	17	MP655	17
MP520	15	MP588	17	MP656	17
MP521	15	MP589	17	MP657	17
MP522	15	MP590	17	MP658	17
MP523	15	MP591	17	MP659	17
MP524	15	MP592	17	MP660	17
MP525	4,15	MP593	17	MP662	17
MP526	15	MP594	17	MP663	17
MP527	15	MP595	17	MP664	17
MP528	15	MP596	17	MP665	17
MP529	16	MP597	17	MP666	17
MP530	16	MP598	17	MP667	17
MP531	4,16	MP599	17	MP668	17
MP532	16	MP600	17	MP669	17
MP533	16	MP601	17	MP670	17
MP534	16	MP602	17	MP671	4,17
MP535	4,16	MP603	17	R1	2,9
MP536	16	MP604	17	S2	2,9
MP537	4,16	MP605	17	XDS1	3,10
MP538	16	MP606	17	XDS2	2,10
MP539	16	MP607	17	XDS3	2,9
MP541	4,16	MP608	17		
MP542	16	MP609	17		
MP543	16	MP610	17		
MP544	16	MP611	17		
MP545	16	MP612	17		
MP546	16	MP613	17		
MP547	16	MP614	17		
MP548	16	MP615	17		
MP549	16	MP616	17		
MP550	16	MP617	17		
MP552	16	MP618	17		
MP553	16	MP619	17		
MP554	16	MP620	17		
MP555	16	MP621	17		
MP556	16	MP622	17		
MP557	16	MP623	17		
MP558	16	MP624	17		
MP559	16	MP625	17		
MP560	16	MP626	17		

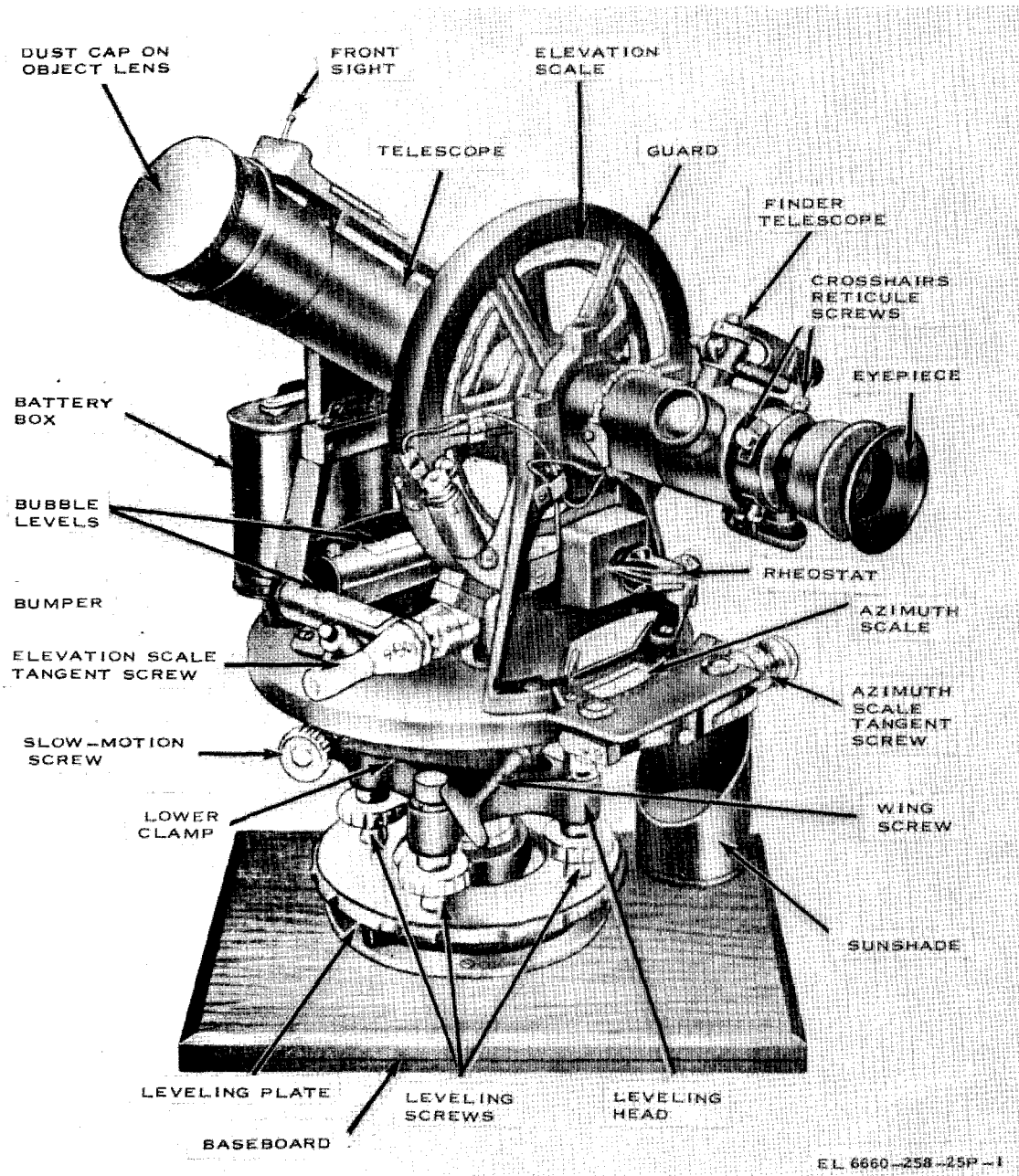
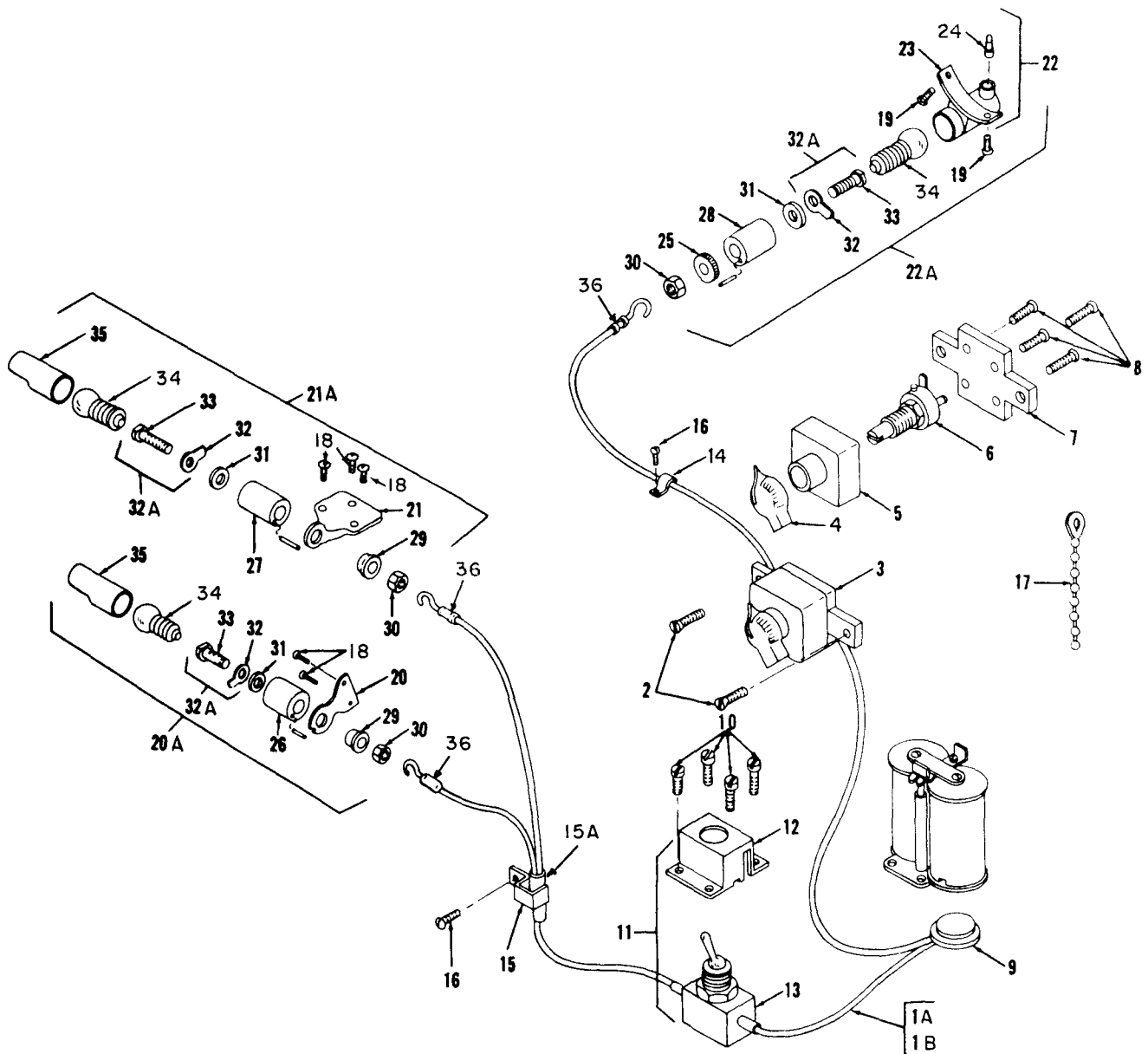


Figure 1. Double center theodolite.



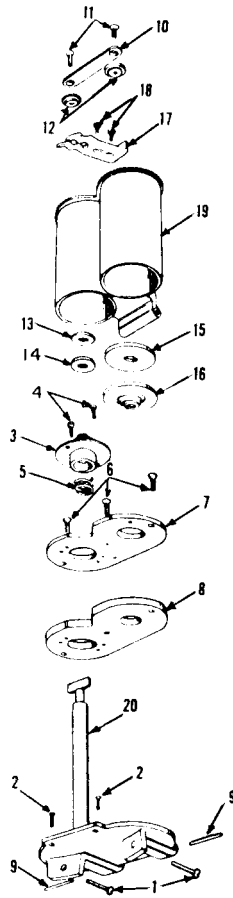
EL 6660-258-25P-2

- 1A Electrical assembly (MP320)
- 1B Electrical assembly
- 2 Oval head screw
- 3 Rheostat assembly
- 4 Knob (MP113)
- 5 Housing (MP24)
- 6 Rheostat (R1)
- 7 Mounting plate (MP115)
- 8 Screw (MP341, MP342, MP343, MP344)
- 9 Contact plug (MP345)
- 10 Screw (MP321, MP322, MP323, MP324)
- 11 Switch assembly (S2)
- 12 Switch housing (MP346)
- 13 Switch (S2)
- 14 Clip, S wire (MP330, MP331)
- 15 Clip, double wire (MP332, MP333, MP334)

- 15A Insulation (MP338, MP339, MP340)
- 16 Screw (MP347, MP348, MP349, MP361, MP362)
- 17 Wire tie
- 18 Screw (MP325, MP326, MP327, MP328, MP329)
- 19 Screw (MP374, MP375)
- 20 Bracket (MP27)
- 20A Lamp assembly (XDS3)
- 21 Bracket (MP14)
- 21A El lamp assembly (XDS2)
- 22 Reflector assembly (MP385)
- 22A Hair lamp assembly (XDS1)
- 23 Reflector (MP387)
- 24 Tip (MP386)
- 25 Insulating bushing (MP380)
- 26 Lampholder (MP360)

- 27 Lampholder (MP373)
- 28 Lampholder (MP384)
- 29 Insulating bushing (MP353, MP366)
- 30 Nut, plain, hexagonal (MP354, MP367, MP379)
- 31 Insulating washer (MP351, MP364, MP381)
- 32 Clip, contact (MP357, MP370, MP378)
- 32A Contact assembly (MP355, MP368, MP376)
- 33 Stud contact (MP356, MP369, MP377)
- 34 Lamp (DS3, DS2, DS1)
- 35 Shade, lamp (MP350, MP363)
- 36 Terminal lug (MP335, MP336, MP337)

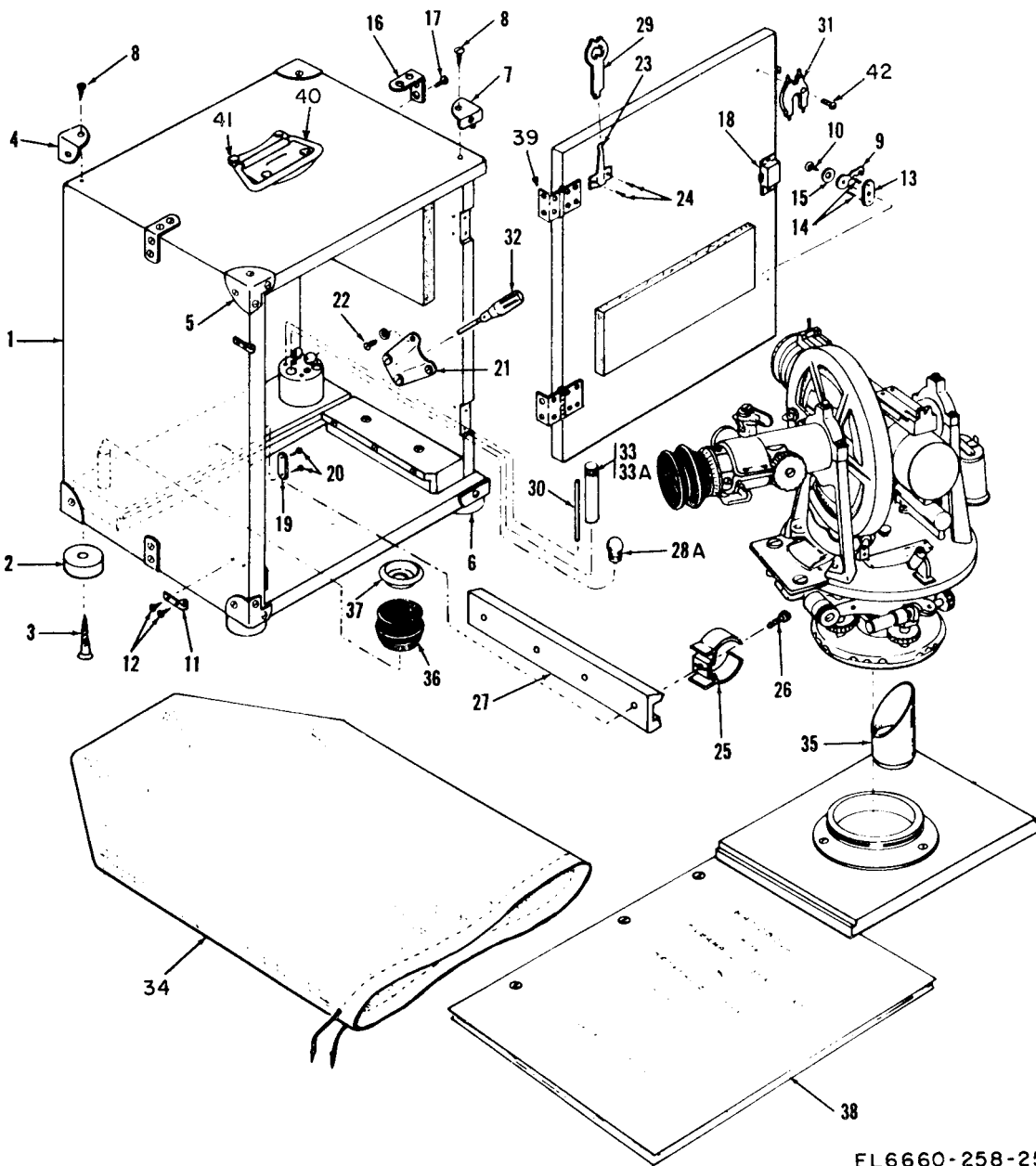
Figure 2. Electrical system.



E L 6660-258-25P-3

- | | | | |
|----|--|----|--|
| 1 | Screw (MP391,
MP392, MP393,
MP394) | 11 | Screw (MP419,
MP420) |
| 2 | Screw (MP389,
MP390) | 12 | Insulator bushing
(MP417,
MP418) |
| 3 | Contact assy
(MP407) | 13 | Insulator washer
(MP416) |
| 4 | Screw (MP408,
MP409) | 14 | Contact nut
(MP415) |
| 5 | Contact spring (E1) | 15 | Insulator, disk
(MP413) |
| 6 | Screw (MP404,
MP405, MP406) | 16 | Contact assembly
(MP411) |
| 7 | Insulator, pl
(MP402) | 17 | Clip (MP399) |
| 8 | Insulator, pl
(MP403) | 18 | Screw (MP400,
MP401) |
| 9 | Pin (MP397, MP398) | 19 | Case (MP396) |
| 10 | Contact bar (MP414) | 20 | Base assy (MP395) |

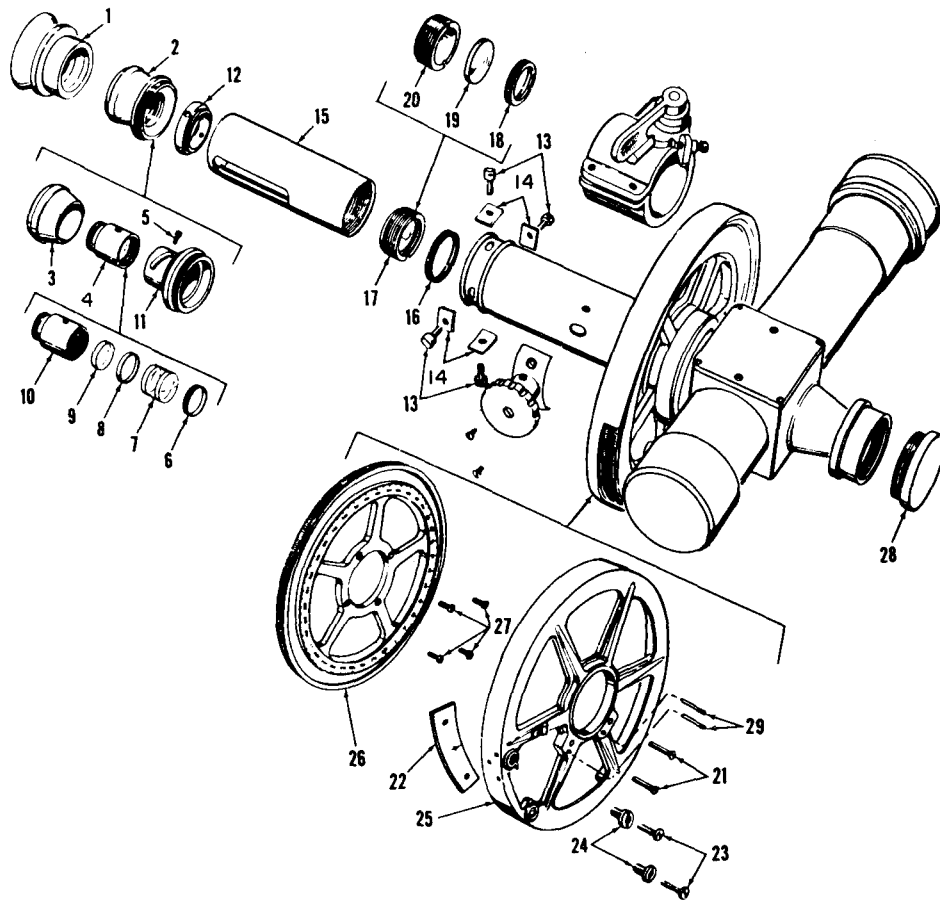
Figure 3. Battery box assembly.



EL6660-258-25P-4

- | | | |
|---|---|---------------------------------------|
| 1 Case, Theodolite CY-787A/U (MP540) | 14 Pin, attaching | 29 Wrench, steel (MP637) |
| 2 Bumper, rubber (MP626, MP627, MP628, MP629) | 15 Washer | 30 Pin, straight, headless (MP101) |
| 3 Screw, wood (MP630, MP631, MP632, MP633) | 16 Bracket angle (MP601, MP602, MP603, MP604) | 31 Wrench, double spanner (MP635) |
| 4 Corner, case (MP567, MP568, MP569, MP570) | 17 Screw, wood (MP605 thru MP620) | 32 Screwdriver |
| 5 Corner, case, L (MP573, MP574) | 18 Lock (MP639) | 33 Oiler, hand (MP551) |
| 6 Corner, R-bottom (MP572) | 19 Strike (MP640) | 33A Oil container |
| 7 Corner, R-top (MP571) | 20 Screw, wood | 34 Hood, canvas (MP671) |
| 8 Screw, wood (MP575 thru MP596) | 21 Sheath, leather (MP562) | 35 Hood, lens (MP23) |
| 9 Hook (MP657, MP658) | 22 Screw, wood (MP563, MP564, MP565, MP566) | 36 Eyeshield, spare |
| 10 Screw, wood | 23 Clip, with drive (MP638) | 37 Retainer, spare eyeshield |
| 11 Keeper (MP659, MP660) | 24 Pin, attaching | 38 Handbook |
| 12 Screw, wood | 25 Battery clips | 39 Screw, wood (MP631 thru MP656) |
| 13 Plate hook | 26 Screw | 40 Handle (MP621) |
| | 27 Bar, battery clip | 41 Rivet (MP622, MP623, MP624, MP625) |
| | 28A Lamp (DS2A) | 42 Screw, wood (MP636) |

Figure 4. Theodolite case assembly.



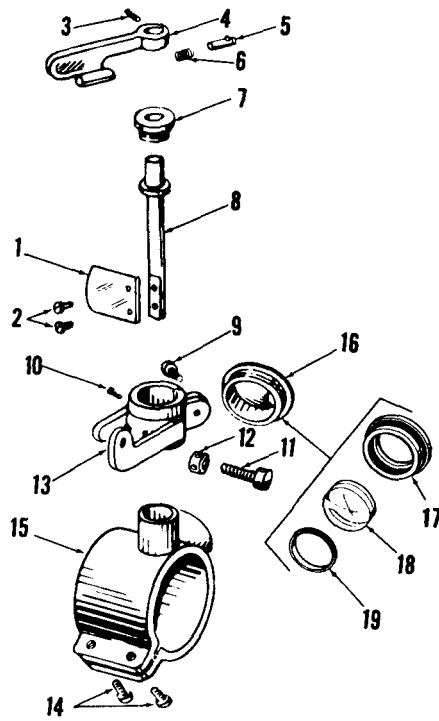
EL 6660-258-25P-5

- 1 Eyeshield (MP5)
- 2 Eyepiece assembly (MP3)
- 3 Cap, eyepiece (MP7, MP7A)
- 4 Cell assembly (MP26)
- 5 Screw (MP98)
- 6 Ring, threaded (MP474)
- 7 Triplet assembly (MP477)
- 8 Eyepiece (MP476)
- 9 Lens-G (MP475)
- 10 Cell (MP7)
- 11 Adapter (MP478)

- 12 Reticle assembly (MP43)
- 13 Screw (MP103, MP104, MP105, MP106)
- 14 Washer, saddle (MP81, MP82, MP83, MP84)
- 15 Slide assembly (MP530)
- 16 Ring, threaded (MP534)
- 17 Lens assembly (MP351)
- 18 Ring, threaded (MP532)
- 19 Lens, -c- (MP44)
- 20 Cell (MP533)

- 21 Screw (MP450, MP451)
- 22 El vernier assembly (MP502)
- 23 Screw (MP96, MP97)
- 24 Screw (MP57, MP58)
- 25 Guard (MP501)
- 26 El circle assembly (MP499)
- 27 Screw (MP109, MP110, MP111, MP112)
- 28 Screw, thrust (MP59)
- 29 Pin, tapered

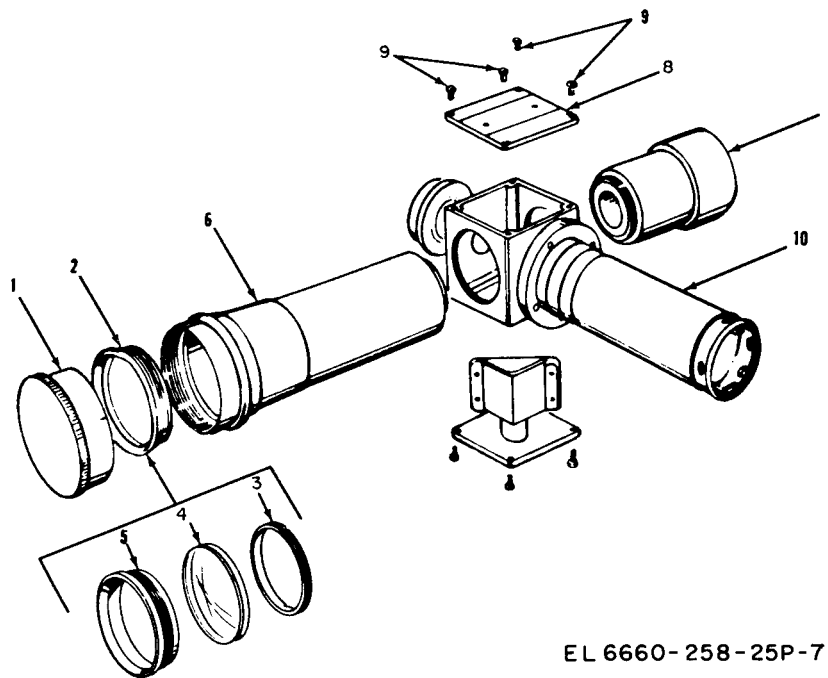
Figure 5. Telescope assembly.



EL 6660-258-25P-6

- | | | | |
|----|---------------------------------|----|---------------------------|
| 1 | Mirror (MP496) | 11 | Screw, adjsut
(MP484) |
| 2 | Screw (MP497,
MP498) | 12 | Nut (MP31) |
| 3 | Screw (MP480) | 13 | Bracket (MP486) |
| 4 | Lever (MP6) | 14 | Screw (MP493,
MP494) |
| 5 | Plunger assembly
(MP481) | 15 | Housing (MP495) |
| 6 | Spring, helical,
comp (MP56) | 16 | Cell assy (MP25) |
| 7 | Nut (MP491) | 17 | Cell (MP488) |
| 8 | Shaft (MP492) | 18 | Lens assembly
(MP489) |
| 9 | Screw (MP485) | 19 | Ring, threaded
(MP490) |
| 10 | Setscrew (MP487) | | |

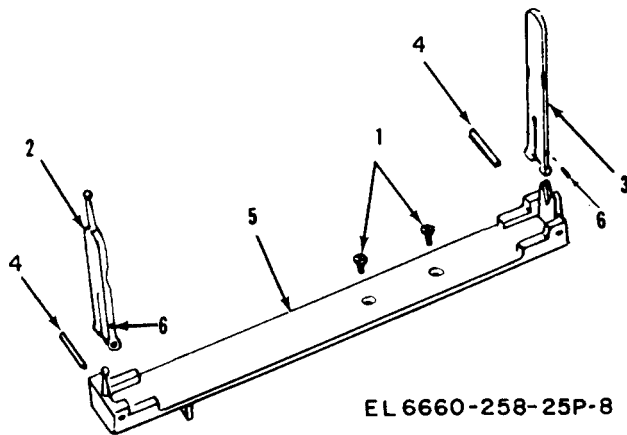
Figure 6. Finder telescope assembly.



EL 6660-258-25P-7

- | | | |
|------------------------------|--------------------------|---------------------|
| 1 Cap, protective (MP3) | 5 Objective cell (MP538) | 8 Top cover (MP504) |
| 2 Objective assembly (MP537) | 6 Tube assy (MP535) | 9 Screw, oval head |
| 3 Ring, threaded (MP539) | 7 Counterweight (MP503) | 10 Trunnion |
| 4 Lens assembly (MP80) | | |

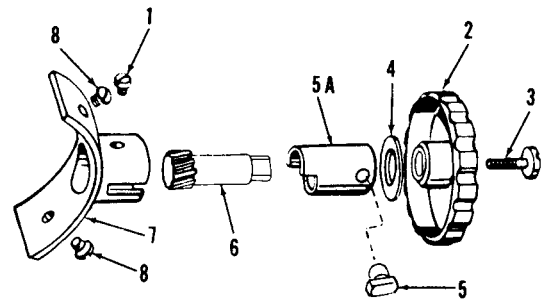
Figure 7. Trunnion assembly.



EL 6660-258-25P-8

- | | |
|------------------------|----------------------|
| 1 Screw (MP201, MP202) | 4 Pin (MP206, MP207) |
| 2 Sight, front (MP204) | 5 Blade (MP203) |
| 3 Sight, rear (MP205) | 6 Screw, tension |

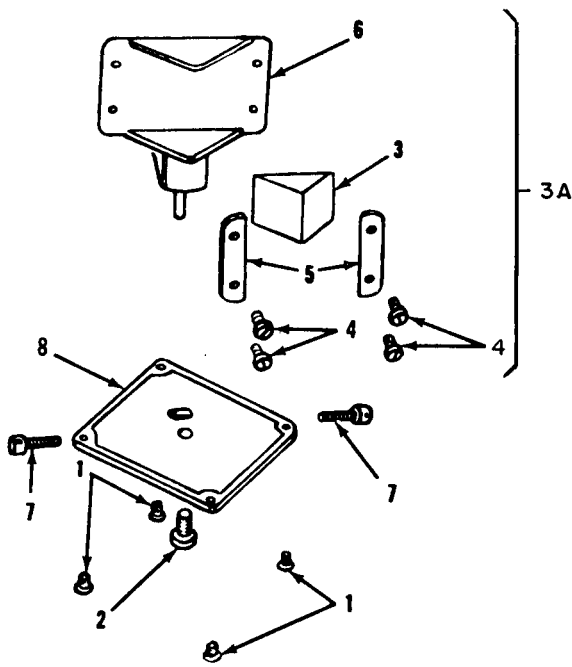
Figure 8. Sight assembly.



EL 6660-258-25P-9

- | | |
|--------------------------|------------------------|
| 1 Screw, machine (MP479) | 5 Key, sleeve bushing |
| 2 Focusing knob (MP528) | 5A Sleeve assembly |
| 3 Screw (MP55) | 6 Pinion |
| 4 Washer (MP87) | 7 Saddle (MP529) |
| | 8 Screw (MP526, MP527) |

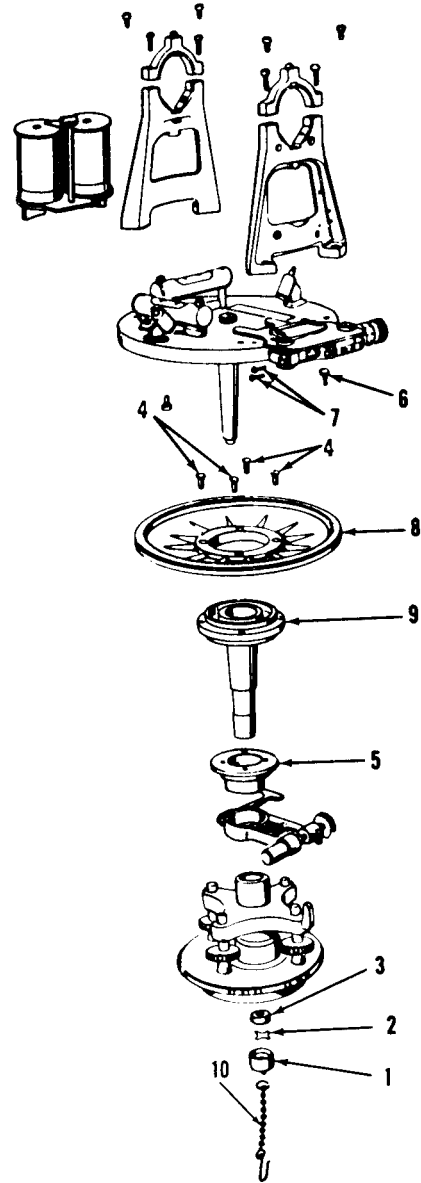
Figure 9. Focusing pinion assembly.



EL 6660-258-25P-10

- | | |
|--|--------------------------------------|
| 1 Screw (MP506, MP507, MP508, MP509, MP510, MP511, MP512, MP513) | 4 Screw (MP521, MP522, MP523, MP524) |
| 2 Screw (MP515) | 5 Clamp (MP519, MP520) |
| 3 Prism (MP517) | 6 Holder assembly (MP518) |
| 3A Prism assembly (MP42) | 7 Screw, adjust (MP44, MP45) |
| | 8 Plate (MP516) |

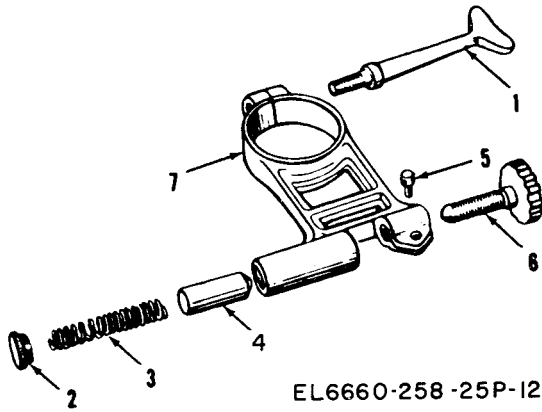
Figure 10. Prism assembly.



EL 6660-258-25P-11

- | | |
|--------------------------------------|--|
| 1 Center cap (MP472) | MP463) |
| 2 Center spring (MP72) | 7 Screw, adjust (MP261, MP262, MP263, MP264) |
| 3 Center nut (MP32) | 8 Circle assembly (MP464) |
| 4 Screw (MP465, MP466, MP467, MP468) | 9 Center assembly (MP457) |
| 5 Collar (MP459) | 10 Plumb bob hook and chain |
| 6 Screw (MP460, MP461, MP462, | |

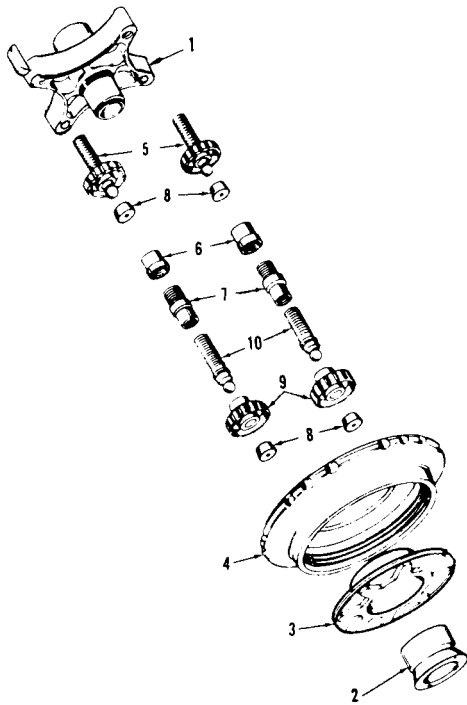
Figure 11. Base and standards assembly.



EL6660-258-25P-12

- | | |
|-----------------------|-------------------------|
| 1 Thumbscrew (MP 102) | 5 Tension screw (MP469) |
| 2 Thumbscrew (MP64) | 6 Screw (MP33) |
| 3 Spring (MP70) | 7 Clamp (MP22) |
| 4 Plunger, detent | |

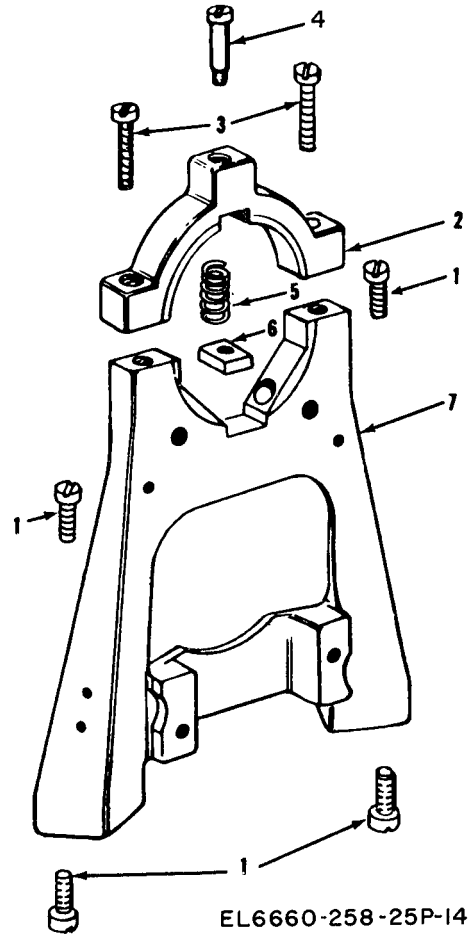
Figure 12. Clamp screw assembly.



EL6660-258-25P-13

- | | |
|---|--|
| 1 Leveling head | 6 Cap (MP17, MP18, MP19, MP20) |
| 2 Nut, half ball (MP114) | 7 Leveling screw guide |
| 3 Shifting center (MP471) | 8 Friction shoe (MP66, MP67, MP68, MP69) |
| 4 Plate, leveling (MP470) | 9 Leveling screw wheel |
| 5 Screw assembly (MP36, MP37, MP38, MP39) | 10 Leveling screw |

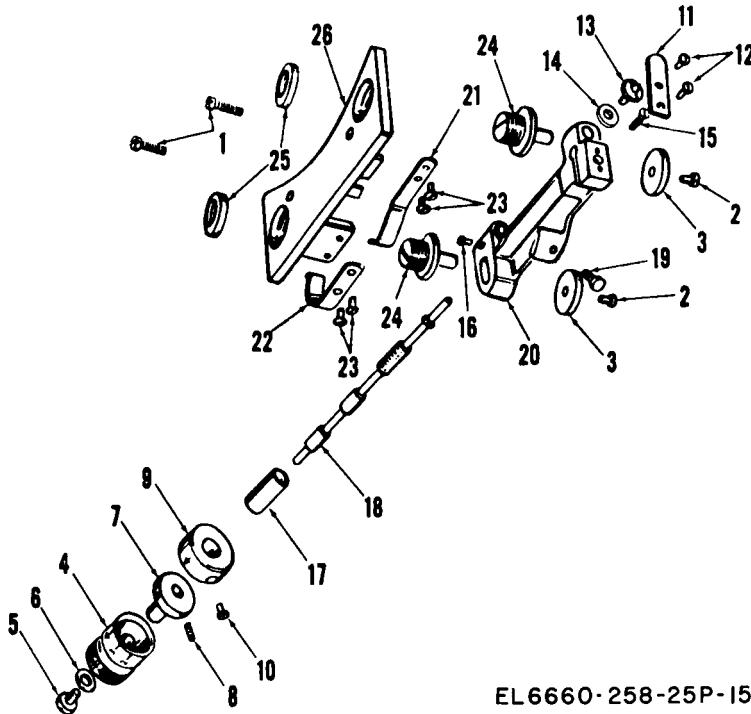
Figure 13. Leveling head assembly.



EL6660-258-25P-14

- | | |
|---------------------------|-----------------------|
| 1 Screw (MP453, MP456) | 4 Screw (MP63) |
| 2 Stationary standard cap | 5 Spring (MP127) |
| 3 Screw (MP103B, MP103C) | 6 Standard cap block |
| | 7 Stationary standard |

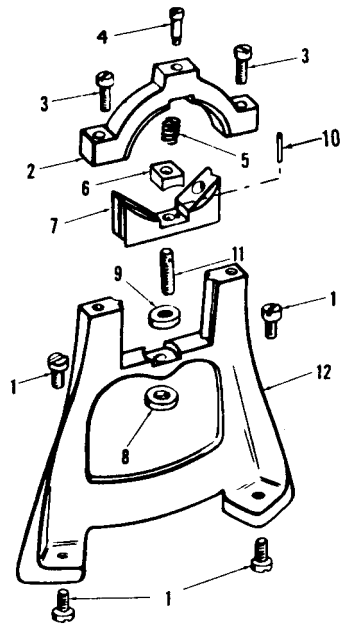
Figure 14. Stationary standard assembly.



EL 6660-258-25P-15

- | | | | | | |
|---|----------------------|----|-------------------------------|----|--|
| 1 | Screw (MP88, MP89) | 10 | Screw (MP250) | 19 | Screw, adjust (MP47) |
| 2 | Screw (MP243, MP244) | 11 | Spring (MP245) | 20 | Frame (MP254) |
| 3 | Washer (MP85, MP86) | 12 | Screw, machine (MP246, MP247) | 21 | Spring (MP75) |
| 4 | Dial (MP256) | 13 | Screw assy (MP248) | 22 | Spring (MP76) |
| 5 | Screw (MP48) | 14 | Washer, flat (MP260) | 23 | Screw, machine (MP238, MP239,
MP240, MP241) |
| 6 | Washer, flat (MP257) | 15 | Screw, machine (MP258) | 24 | Stud (MP77, MP78) |
| 7 | Adapter (MP252) | 16 | Screw (MP259) | 25 | Nut (MP29, MP30) |
| 8 | Setscrew (MP253) | 17 | Bushing (MP251) | 26 | Plate (MP237) |
| 9 | Fixed drum (MP249) | 18 | Worm shaft (MP255) | | |

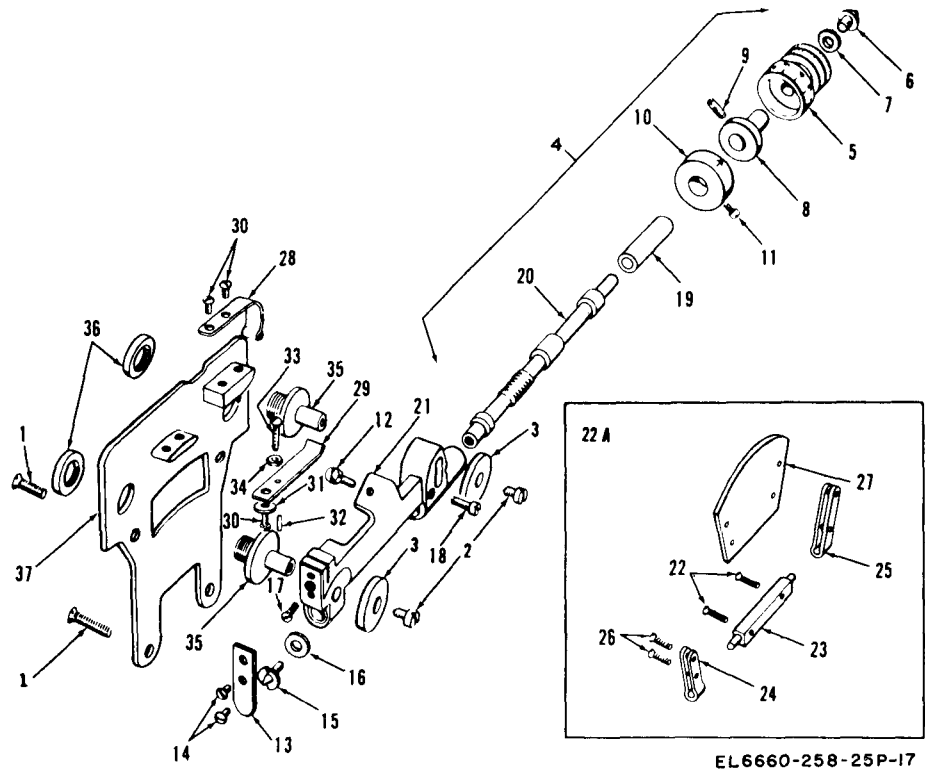
Figure 15. Vertical tangent screw assembly.



EL6660-258-25P-16

- | | | | |
|---|--|----|--------------------------|
| 1 | Screw (MP442,
MP443, MP444,
MP445, MP446,
MP447, MP448,
MP449) | 5 | Spring (MP71) |
| 2 | Adjustable standard
cap | 6 | Standard cap block |
| 3 | Screw (MP103,
MP103A) | 7 | Adjusting block |
| 4 | Screw (MP62) | 8 | Nut (MP35) |
| | | 9 | Nut (MP34) |
| | | 10 | Stud pin |
| | | 11 | Block stud |
| | | 12 | Standard assy
(MP441) |

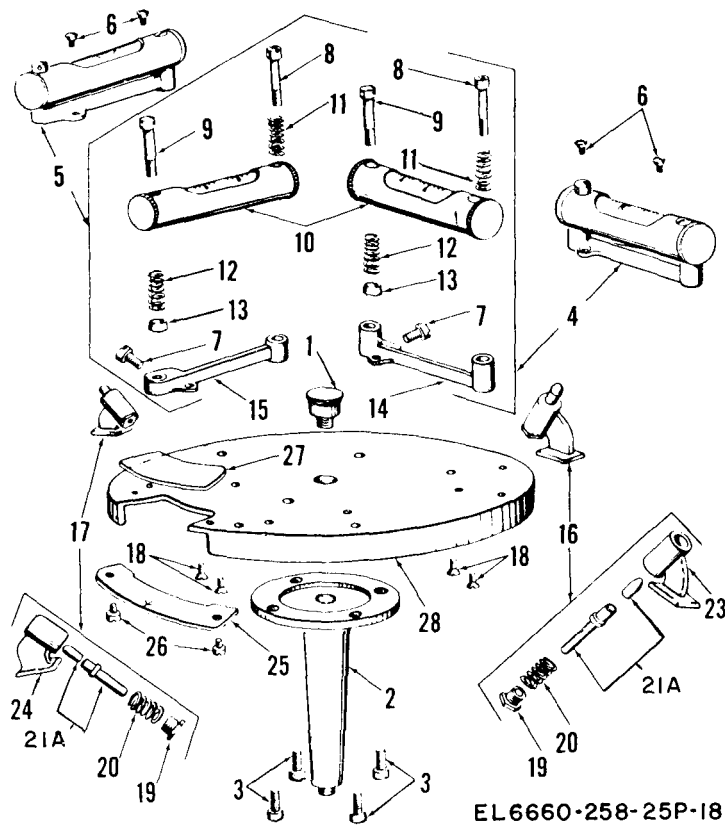
Figure 16. Adjustable standard assembly.



EL6660-258-25P-17

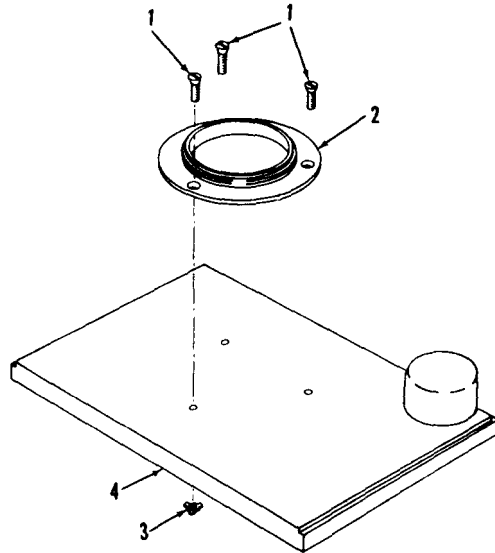
- | | | |
|----------------------------------|---------------------------------------|---|
| 1 Screw (MP267, MP268) | 15 Screw assembly (MP296) | 27 Vernier reel (MP286) |
| 2 Screw (MP269, MP270) | 16 Washer, flat (MP305) | 28 Spring (MP126) |
| 3 Washer (MP130, MP131) | 17 Screw, machine (MP306) | 29 Spring (MP272) |
| 4 Frame assembly (MP291) | 18 Screw (MP307) | 30 Screw, machine (MP273, MP274, MP275) |
| 5 Dial (MP304) | 19 Bushing (MP299) | 31 Washer (MP278) |
| 6 Screw (MP49) | 20 Worm shaft (MP300) | 32 Pin (MP279) |
| 7 Washer, flat (MP303) | 21 Frame (MP292) | 33 Screw (MP276) |
| 8 Adapter (MP301) | 22 Screw (MP281, MP282) | 34 Nut, plain, hexagonal (MP277) |
| 9 Setscrew (MP302) | 22A Reflector assy (MP280) | 35 Stud (MP128, MP129) |
| 10 Fixed drum (MP297) | 23 Bar (MP284) | 36 Nut (MP119, MP120) |
| 11 Screw (MP298) | 24 Hinge, right (MP283) | 37 Plate (MP271) |
| 12 Screw, adjust (MP46) | 25 Hinge, left (MP285) | |
| 13 Spring (MP293) | 26 Screw (MP287, MP288, MP289, MP290) | |
| 14 Screw, machine (MP294, MP295) | | |

Figure 17. Horizontal tangent screw assembly.



- | | | |
|--------------------------------------|---|-------------------------------------|
| 1 Thumbscrew (MP65) | 11 Spring (MP93, MP118) | 20 Spring, adjust (MP430, MP439) |
| 2 Inner center assembly | 12 Spring, adjust (MP99, MP100) | 21A Plunger assembly (MP432, MP440) |
| 3 Fillister head screw | 13 Spacer, sleeve (MP313, MP317) | 22 Not used. |
| 4 High level assembly (MP10) | 14 Bracket (MP318) | 23 Bracket (MP429) |
| 5 Lowbubble assembly (MP9) | 15 Bracket (MP314) | 24 Bracket (MP438) |
| 6 Screw (MP308, MP309, MP310, MP311) | 16 Bumper assembly (MP425) | 25 Vernier assembly (MP421) |
| 7 Screw (MP315, MP319) | 17 Low bumper assembly (MP433) | 26 Screw (MP422, MP423, MP424) |
| 8 Screw (MP92, MP117) | 18 Screw, machine (MP434, MP435, MP436) | 27 Vernier cover glass (MP473) |
| 9 Screw, adjust (MP312, MP316) | 19 Cap (MP431, MP437) | 28 Top plate (MP40) |
| 10 Level, spirit (MP9, MP10) | | |

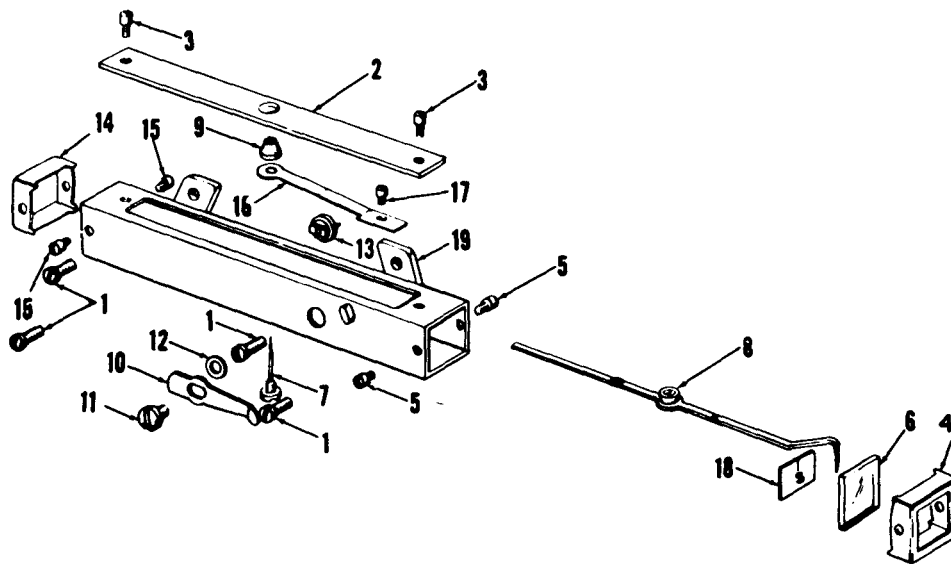
Figure 18. Top plate assembly.



EL6660-258-25P-19

- | | | | |
|---|--|---|---------------------------------|
| 1 | Screw, machine
(MP663, MP664,
MP665) | 3 | Teenut (MP666,
MP667, MP668) |
| 2 | Plate, base (MP662) | 4 | Baseboard (MP28) |

Figure 19. Baseboard assembly.



EL6660-258-25P-20

- | | | | | | |
|---|--|----|-----------------------|----|-----------------------------|
| 1 | Screw, machine (MP208, MP209,
MP210, MP211) | 6 | Glass (MP220) | 13 | Cam (MP222) |
| 2 | Top plate (MP212) | 7 | Screw assy (MP230) | 14 | Cover (MP224) |
| 3 | Fillister head screw | 8 | Needle assy (MP231) | 15 | Fillister head screw |
| 4 | Cover (MP225) | 9 | Bearing (MP213) | 16 | Lifter (MP214) |
| 5 | Screw (MP226, MP227, MP228,
MP229) | 10 | Lifter arm (MP221) | 17 | Screw (MP215, MP216, MP217) |
| | | 11 | Screw (MP223) | 18 | Scale board (MP219) |
| | | 12 | Washer, convex (MP95) | 19 | Compass box (MP218) |

Figure 20. Compass assembly.

By Order of the Secretary of the Army:

W. C. WESTMORELAND,
*General, United States Army,
Chief of Staff.*

Official:

KENNETH G. WICKHAM,
*Major General, United States Army,
The Adjutant General.*

Distribution:

Active Army:

USASA (2)	Gen Dep (2)
CNGB (1)	Sig Sec Gen Dep (5)
ASCS-E (2)	Sig Dep (10)
Dir of Trans (1)	Sig FLDMS (2)
CofEngrs (1)	ATS (1)
TSG (1)	USAERDAA (2)
CofSpts (1)	USAERDAW (5)
USAARENBD (2)	USACRREL (2)
USAMB (10)	MAAG (1)
USACDC (2)	USARMIS (1)
USACDC Agcy (1)	DPG (50)
USAMC (1)	USARV (5)
CONARC (5)	WRAMC (1)
ARADCOM (2)	USACDCEC (5)
ARADCOM Rgn (2)	Units org under fol TOE:
USAFABD (2)	(2 cys each unit)
OS Maj Comd (4)	6-100
USARYIS (5)	6-186
LOGCOMD (5)	6-185
USAMICOM (4)	6-200
USATECOM (2)	6-201
USASTRATCOM (4)	6-300
USAESC (70)	6-302
MDW (1)	6-385
Armies (2)	6-386
Corps (2)	6-525
1st Cav Div (3)	6-526
Svc Colleges (2)	6-565
USASESS (15)	6-575
USAADS (2)	6-576
USAFAS (20)	6-577
USAARMS (2)	6-700
USAIS (2)	6-701
USAES (2)	7
USAINTS (3)	7-100
Instl (2) except	11-19
Fort Gordon (10)	11-85
Fort Huachuca (10)	11-95
Fort Carson (21)	11-117
WSMR (3)	11-158
Army Depts (2) except	11-237
LBAD (14)	11-500 (AA-AC)
SAAD (30)	17
TOAD (14)	29-134
LEAD (7)	29-136
NAAD (5)	37
SVAD (5)	37-100
ATAD (10)	39-51
	57

NG: None.

USAR: None.

For explanation of abbreviations used see AR 310-50.

TM 11-6660-258-25P THEODOLITES, DOUBLE CENTER ML-474/GM AND ML-474A/GM 1970